



RIPPA[®]

R15 ECO | MINI EXCAVATOR



R15 ECO: EXCLUSIVE FEATURES



ENGINE

KUBOTA D722 ENGINE, RATED POWER 10.2KW (13.7HP)

- High-Efficiency power output
- Low fuel consumption
- Low noise & vibration



PUMP

GEAR PUMP

- Provides stable hydraulic flow
- Flow rates of 27.5 L/min (7.3 gpm)
- Keep the hydraulic system stable



VALVE

9-WAY PILOT VALVE

- Smooth and precise pilot control
- Supports multi-function hydraulic operation
- Stable and reliable performance



R15 ECO RIPPA



TRACK

ENGINEERING RUBBER TRACKS

- Smooth driving with little vibration
- Easily handle slopes and complex working conditions



MOTOR

BUILT-IN WALKING MOTOR

- The motor and reducer are integrated into one design.
- The overall structure is more compact
- It is more durable than an exposed structure.



FLEXIBLE BODY





▶ ULTRA COMPACT DIMENSIONS

There's a lot to like about RIPPA's new ultra-compact excavators. They're so compact you can easily work safely in tight spots. They also have an improved control layout*, and upgraded comfort features to keep you working efficiently and comfortably. Best of all, you can depend on these RIPPA ultra-compact excavators to get the job done with speed and efficiency.

▶ STRENGTHEN BULLDOZER BLADE

The bulldozer blade body is made of high-strength steel, making it wear-resistant and impact-resistant. Reinforced with ribs, it boasts increased strength and service life. Oil injection holes have been added at the joints for easy lubrication. Its quick-fold blade adjusts to size instantly with the simple pull of a pin.



WIDE RANGE OF OPERATIONS

▶ CAN BE EXCAVATED IN NARROW SPACES

By swinging the work machine, it is possible to excavate in narrow spaces and near walls.

Boom swing angle (right): 40°

Boom swing angle (left): 52°

▶ RETRACTABLE TRACKS

With a single, easy-to-operate lever, the hydraulically adjustable R15 ECO excavator reduces the track width in seconds (up to 900 mm) to allow navigation in tight spaces. Conversely, it can widen the track width up to 1200 mm. With the simple pull of a pin, its quick-folding blade adjusts in size instantly. When set down, these ultra-compact excavators can easily fit through most doorways, allowing access to the interior of buildings.



FEATURES AND FUNCTIONS



KEY FEATURES



- » The control levers are located on both sides of the seat so that the operator can maintain a better, more relaxed working posture and have excellent forward visibility.
- » Adjustable seat, ergonomically designed to support the operator's back, waist and neck, reducing fatigue caused by long-term operation.



- » The hydraulic quick-change tilt switch has dual mechanical protection to prevent accidental activation, enhancing safety.
- » The hydraulic quick-change valve block on the boom ensures safer hydraulic lines and reduces damage during operation.





▶ FOOT PEDAL

Equipped with dual pilot foot valves and two single pilot foot valves, providing smoother and more stable operation with improved driving comfort.



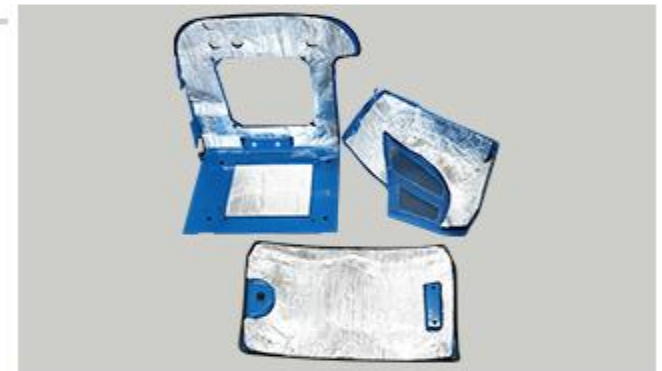
▶ FOUR-WAY CRUSHING PIPELINE

Four-way high-pressure crushing oil pipe can realize more auxiliary equipment operations



▶ SEAT COVER SOUND INSULATION

Sound-absorbing cotton inside the seat cover reduces noise and helps isolate heat for improved operator comfort.



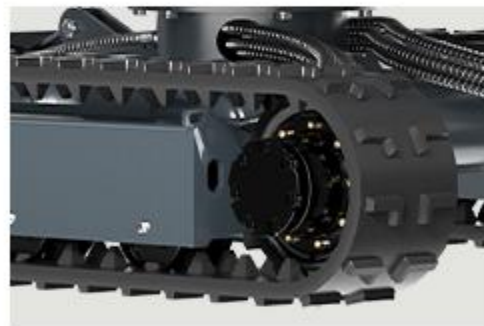
▶ ENHANCED SAFETY DRIVING CANOPY

A four-post driving canopy with a front-mounted safety net enhances safety and prevents injury from falling objects; equipped with warning lights and illumination lights, it provides clear visibility at night or in low-light conditions, ensuring construction efficiency; it expands the driver's field of vision, reduces blind spots, and improves operational safety.



▶ LIFTING HOLE

More convenient movement and more fixing points for the transport of the machine.



▶ HIGH / LOW SPEED

Switchable high and low speeds provide flexible travel and better efficiency in different working conditions.



▶ FRONT HEADLIGHT

The roof is fitted with a front spotlight, ensuring better illumination and safety in low-light conditions.

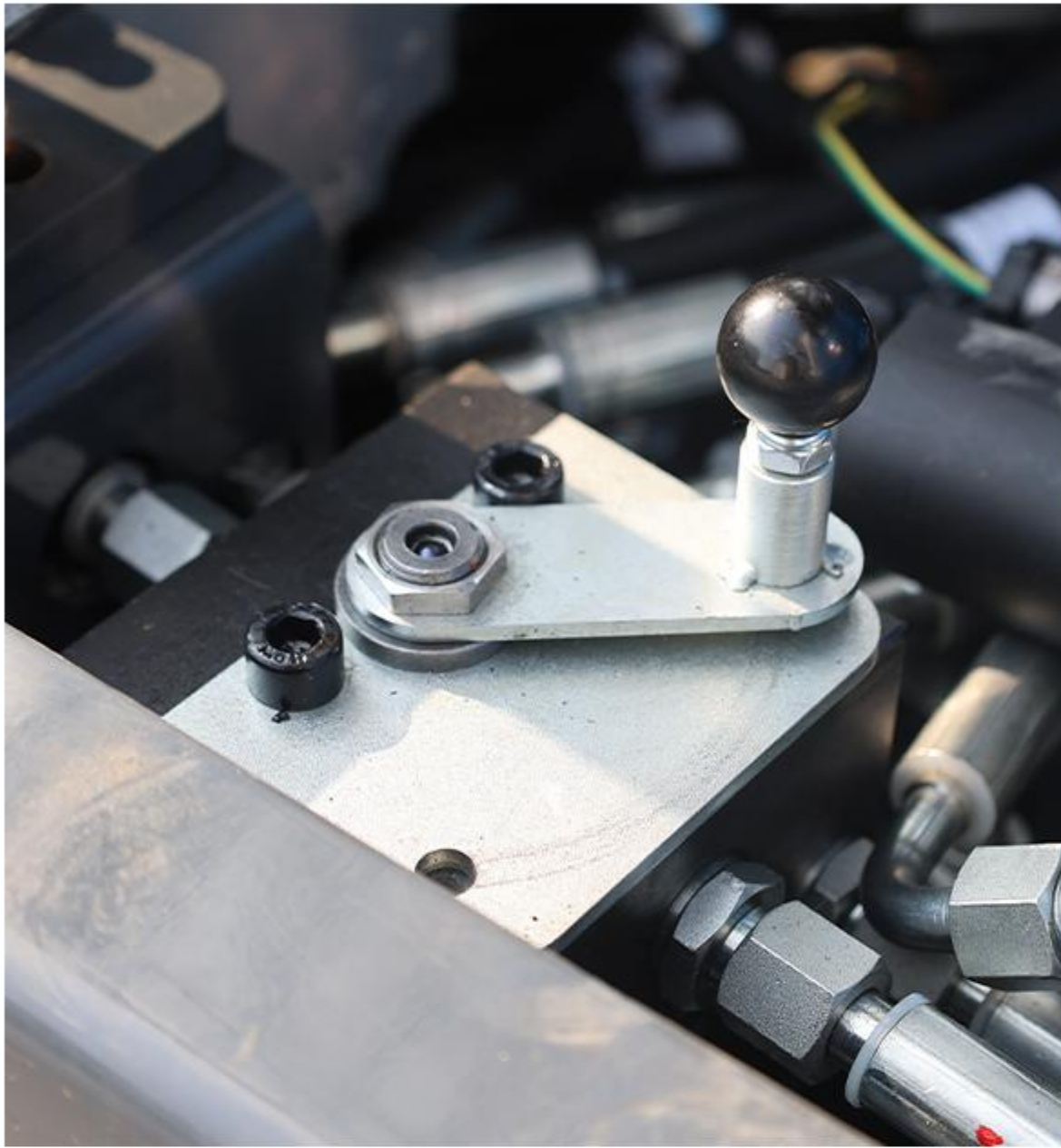


▶ WARNING LIGHT

Provides clear visual alerts during operation, improves visibility and enhances safety during operation.



FEATURES AND FUNCTIONS



▶ CONTROL PATTERN CHANGE VALVE

Allows easy switching between left-hand and right-hand control patterns for the boom and arm, meeting different operator preferences. The manual switching design ensures more stable performance, simple operation, and longer service life.

▶ NICKEL-PLATED GREASE NIPPLE

The cylinder is fitted with a nickel-plated pointed grease nipple and a welded protective block. The nickel plating resists water, mud, and corrosion while enhancing surface hardness. The pointed design ensures precise grease gun connection, preventing slipping or leakage, and the welded guard protects the nipple from damage during operation.



EASY TO MAINTAIN



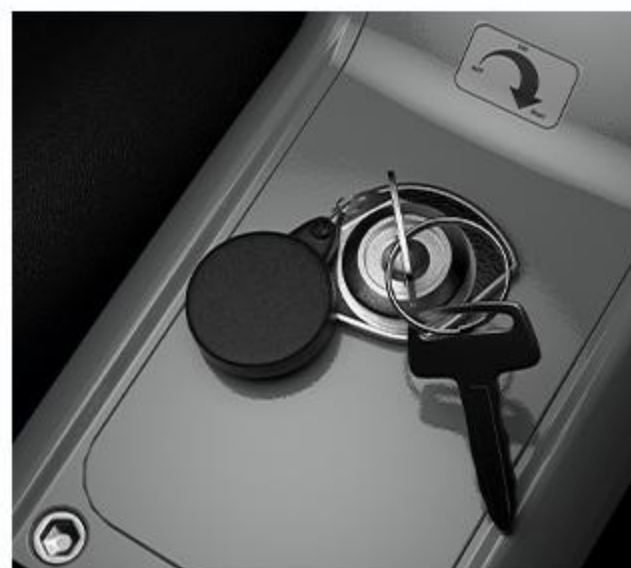
▶ OPENABLE REAR HOOD

The rear opening hood provides easy access to the engine, and maintenance is simple with the hydraulic service port plumbing conveniently located and protected.



▶ CABLE PROTECTION FOR OIL PIPELINES

To improve reliability and extend service life, RIPPA excavators are now equipped with steel spring guards on the undercarriage hydraulic hoses. This improvement ensures optimum protection against wear caused by friction, sharp objects and rough terrain.



▶ RUBBER KEY COVER

The rubber cover protects the key slot when the key is removed, preventing dust or debris from entering. This helps avoid starting issues and protects the internal electrical components of the key, extending its lifespan and offering a more user-friendly design.

DRIVER'S CAB MODEL



► FLIP UP WINDSHIELD

The windshield can be flipped up, and it is easy to switch between closed and open modes according to weather and working conditions. In hot weather, the flip-up design provides natural ventilation, improves air circulation inside the cab, and enhances comfort. The front windshield is easy to clean, making maintenance easier.



► WIPERS

It can spray windshield washer fluid for a cleaner glass, ensuring drivers have good visibility in rain, snow, or muddy weather, improving work safety, preventing operational errors caused by obstructed vision, increasing work efficiency in inclement weather, and reducing downtime.



► PROTECTIVE NET

It can effectively block flying stones, branches and other debris, significantly reduce the impact damage to the cab glass and internal equipment, and protect the driver's personal safety.



► REVERSING CAMERA

It can display the working environment behind the machine in real time, effectively reducing blind spots and helping operators to clearly judge obstacles and distances behind. It makes reversing safer and more accurate in narrow or complex working conditions, improving the overall safety and efficiency of the machine operation.



► HEATER

Rapidly heats the cab to keep the operator warm, reduce fatigue, and clear windshield fog and frost for better visibility.



► FAN

Improves ventilation, keeps the cab fresh and cool, and enhances operator comfort and efficiency.



► FIRE EXTINGUISHER

Provides quick fire suppression in emergency situations, helping protect the operator and equipment.



► WINDOW BREAKER

Quick and safe emergency window breaking, compact and easy to handle.



RIPPA ATTACHMENTS



PERFORMANCE MATCHED

It supports quick attachment changes, enabling one machine to handle digging, breaking, grabbing, drilling, leveling, and trenching. By adapting to different tasks, it boosts efficiency, reduces equipment and rental costs, and lowers labor dependency. More than just a machine, it's a personal engineering team ready to work anytime.

Visit rippa.com



BUCKET

- Optional bucket sizes.
- weight:15kg
size:45 × 20 × 40 cm
- weight:22kg
size:45 × 40 × 40 cm
- weight:29kg
size:45 × 60 × 40 cm
- weight:36kg
size:45 × 80 × 40 cm



MUD BUCKET

- Optional bucket sizes.
- weight:16.5kg
size:35 × 40 × 40 cm
- weight:21kg
size:35 × 60 × 40 cm
- weight:27kg
size:35 × 80 × 40 cm
- weight:32kg
size:35 × 100 × 40 cm



RIDDLE BUCKET

- Optional bucket sizes.
- weight:31kg
size:45 × 60 × 40 cm



RAKE

- Optional rake sizes.
- weight:16.5kg
size:53 × 43 × 18 cm
- weight:22kg
size:53 × 63 × 18 cm
- weight:28kg
size:53 × 83 × 18 cm



RIPPER

- Optional ripper size
- weight:16.5kg
size:53 × 14 × 20 cm



TILTING BUCKET

- Optional tilting bucket size
- weight:39.5kg
size:72 × 60 × 30 cm
- weight:53kg
size:72 × 80 × 30 cm
- weight:58kg
size:72 × 100 × 30 cm



LOG GRAPPLE

- Optional Lightweight log grapple sizes.
- weight:37kg
size:50 × 45 × 54 cm



HYDRAULIC BREAKER

- Hydraulic breaker size
- weight:79kg
size:66 × 30 × 40 cm



QUICK CHANGE

- Mechanical quick-change size
- weight:19kg
size:31 × 19 × 25 cm



ROTARY DRILL

- Optional rotary drill sizes.
- Weight: 50kg
Length: 130cm Diameter: 15cm
- Weight: 51kg
Length: 130cm Diameter: 20cm
- Weight: 53kg
Length: 150cm Diameter: 30cm
- Weight: 54kg
Length: 130cm Diameter: 30cm
- Weight: 55kg
Length: 170cm Diameter: 20cm



PALLET FORK

- Optional pallet fork sizes.
- weight: 72 kg
size: 120 × 52 × 60 cm



COMPACTOR PLATE

- Optional compactor plate sizes.
- weight: 111kg
size: 34 × 65 × 57 cm



HYDRAULIC THUMB

- Optional hydraulic thumb sizes.
- weight: 21.5kg
- weight: 26kg
- weight: 22.8kg

APPLICATION SCENARIOS



Pool Digging



Driveway Repair



Drainage Trenching



Stump Removal



Tree Planting



Snow removal



Land Leveling



Fence Installation



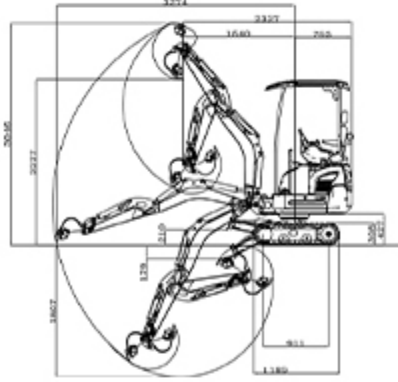
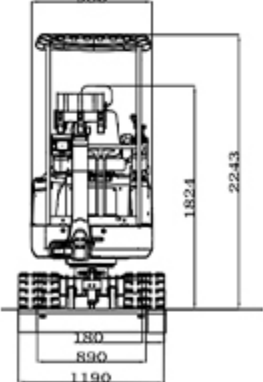
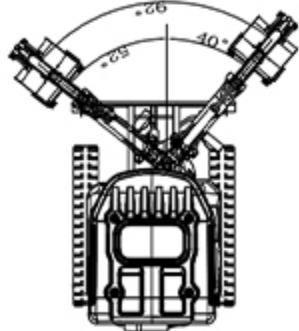
Small Foundations



Farm Construction

DETAILED PARAMETER CONFIGURATION

Basic parameters		
Machine Weight/Operating Weight	1440kg/1532kg	3175lb/3377 lb
Bucket capacity	0.018m ³	0.64ft ³
Travel speed low/high	0-1.5/0-2.5km/h	0-0.93/0-1.6mph
Gradeability	30%	30%
Ground pressure	31.4kpa	4.6psi
Maximum digging force	10.4kN	2338lbf
Maximum digging radius	3266mm	128.7in
Maximum digging depth	1807mm	71.1in
Maximum digging height	3046mm	119.9in
Maximum dumping height	2277mm	89.6in
Maximum deflection angle	92°	92°
Track extension range	900-1200mm	35.4-47.2in
Body		
Transport length	2321mm	91.4in
Transport width	983mm	38.7in
Transport height	2363mm	93.1in
Counterweight ground clearance	426mm	16.8in
Bucket width	400mm	15.7in
Boom length	1477mm	58.1in
Arm length	800mm	31.5in
Bulldozer blade width	893-1193mm	35.2-47in
Engine		
Engine brand	Kubota	Kubota
Engine model	D722	D722
Maximum power	10.2kw	13.7hp
Maximum speed	2500rpm	2500rpm
Displacement	0.719L	0.19gal
Number of cylinders	3	3
Cooling method	Water-cooled	Water-cooled
Engine oil change amount	2.5L	0.66gal
Fuel form	Diesel	Diesel
Fuel grade	0/-10	0/-10
Theoretical fuel consumption	1.1-1.5L/h	0.29-0.40gal
Hydraulic system		
Main pump type/model	8ml/r+3ml/r	
Multi-way valve	9-port pilot-operated multi-way valve	
Multi-way valve brand	Tengfei	
Rated set pressure (Mpa)	18MPa	
Maximum set pressure (MPa)	18.5MPa	
Type of walking hydraulic motor	WDM-390	

Unit: mm

Shandong Rippa Machinery Group Co., Ltd.

Address: No. 39, Guang'an Road, Lihang Sub-district Office, High-tech Zone, Jining City, Shandong Province.

Some specifications are based on engineering measurements and may differ from actual conditions. Specifications are for comparison purposes only and are subject to change without notice. Specifications of individual RIPPA devices may vary due to normal variations in design, manufacturing, operating conditions and other factors. Some images of RIPPA devices are not limited to standard packages.



RIPPA®

EXCAVATOR PARTS PACKAGE LIST

ONE-STOP PARTS SOLUTION, SAVING YOU TIME, EFFORT, AND MONEY.

Note: Product images are for reference only. Actual parts may vary in appearance depending on the excavator model, engine configuration, and production batch. Please refer to the part number (Coding) or contact RIPPA before ordering.



SELECTED HIGH-QUALITY ACCESSORIES



STABLE AND RELIABLE PERFORMANCE



REDUCE MAINTENANCE COSTS



BUYING IN BULK OFFERS BETTER DEALS

R15 ECO (Kubota) PARTS LIST

<p>Routine maintenance parts</p>	<p>Air Filter Element x 3 LP0111010004</p>	<p>Oil Filter Element x 3 LP0111020180</p>	<p>Diesel Fuel Filter Element x 3 LP0111020179</p>	<p>Pilot Hydraulic Filter Element x 3 LP0116020136</p>	<p>Why choose pack ?</p> <ul style="list-style-type: none"> ✓ Comprehensive coverage of commonly used accessories ✓ Original factory standards, quality guaranteed ✓ Reduce downtime and improve efficiency ✓ Package deals, great value!
	<p>Return Hydraulic Oil Filter Element x 3 LP0116020011</p>	<p>Grease Fitting x 3 LP011109254</p>	<p>Bucket Tooth x 3 LP0111080032</p>		
<p>Oil tank</p>	<p>Boom Cylinder x 1 LP0115010206</p>	<p>Stick Cylinder x 1 LP0115010207</p>	<p>Bucket Cylinder x 1 LP0115010208</p>		
<p>Walking and Turning System</p>	<p>Track Adjuster Screw x 1 LP0102070016</p>	<p>Guide Wheel x 1 LP0102070002</p>	<p>Starter Motor x 1 LP0111020200</p>		
<p>Electrical Components</p>	<p>Main Power Switch x 1 LP0106040064</p>	<p>Key Switch x 1 LP0106040002</p>	<p>Telescopic Solenoid Valve x 1 LP0115030028</p>		



Scan the QR code now for inquiries and ordering.