



**RIPPA**<sup>®</sup>

# R13 PRO | MINI EXCAVATOR



# R13 PRO: EXCLUSIVE FEATURES



## ENGINE

### KUBOTA D722 ENGINE, RATED POWER 10.2KW (13.7HP)

- High-Efficiency power output
- Low fuel consumption
- Low noise & vibration



## PUMP

### GEAR PUMP

- Provides stable hydraulic flow
- Flow rates of 32.5 L/min (8.6 gpm)
- Keep the hydraulic system stable



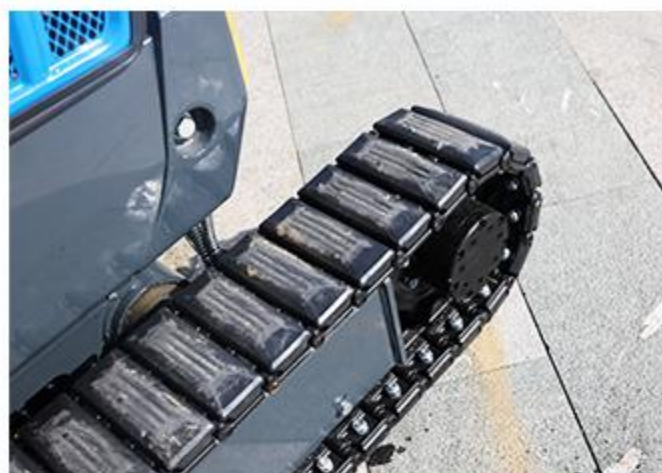
## VALVE

### HYDRAULIC AND MECHANICAL VALVE

- Easy and precise operation with responsive control
- Stable performance with smooth response
- Durable structure for reliable long-term use



# R13 PRO RIPPA



## TRACK

### STEEL TRACK WITH RUBBER PADS

- Protects paved surfaces from damage
- Provides strong traction and stability
- Reduces vibration and improves ride comfort



# FEATURES AND FUNCTIONS





### ► COMPACT DESIGN

With a width of only 849 mm, it can easily operate in confined spaces such as backyard alleyways, narrow passages, and tight corners. Its compact design allows it to access areas where larger machines cannot enter, making it ideal for tasks like trenching, landscaping, and maintenance work. Even in limited spaces, it can maintain efficient and stable performance.

### ► RETRACTABLE DOZER BLADE

Features a retractable dozer blade with easily adjustable width for tight spaces. The blade can be extended or retracted by removing and attaching the pin, providing flexible operation and high pushing efficiency—ideal for leveling yards and small-scale construction projects.



## WIDE RANGE OF OPERATIONS

### ► CAN BE EXCAVATED IN NARROW SPACES

By swinging the work machine, it is possible to excavate in narrow spaces and near walls.

Boom swing angle (right): 50°

Boom swing angle (left): 55°

### ► RETRACTABLE TRACKS

It features retractable tracks with a range of 750-990 mm, easily extended and retracted via a control lever. When the tracks are retracted, it can easily pass through narrow passages and doorways; when extended, it offers excellent stability and is suitable for various tasks.



# FEATURES AND FUNCTIONS



## KEY FEATURES



- »» Features a pilot hydraulic system with dual control levers, providing smooth and precise operation, quick response, and improved work efficiency.
- »» The operation lock lever prevents engine start unless raised, ensuring safe operation.



- »» The hydraulic quick-change tilt switch has dual mechanical protection to prevent accidental activation, enhancing safety.
- »» The hydraulic quick-change valve block on the boom ensures safer hydraulic lines and reduces damage during operation.





- » Equipped with a rearview mirror under the roof for enhanced visibility and safety during operation.
- » The roof is fitted with a front spotlight and warning lights, ensuring better illumination and safety in low-light conditions.

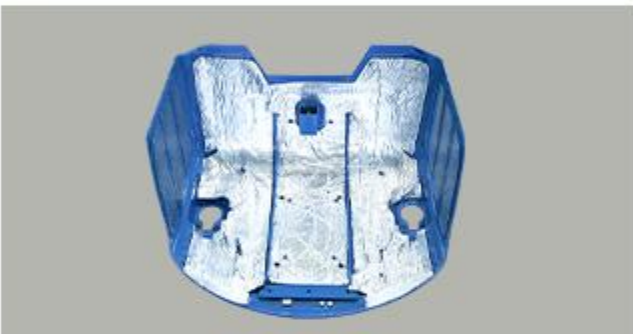


- » The fully-opening bonnet opens wide to the rear, allowing easy access for daily inspections and part replacements.
- » The air filter keeps dust and impurities out of the engine, extending its service life.



### SEAT COVER SOUND INSULATION

Sound-absorbing cotton inside the seat cover reduces noise and helps isolate heat for improved operator comfort.



### HYDRAULIC THUMB & QUICK COUPLER

Improves efficiency and safety, allowing quick attachment changes and precise material handling.



### NICKEL-PLATED GREASE NIPPLE

Welded guard for better protection. The pointed design ensures precise grease gun connection and prevents slipping or leakage.



### LOWER FRAME LIFTING POINTS

Two lifting points are added near the undercarriage motor for safer hoisting. They allow quick connection to hooks or cables for safe lifting and recovery in emergency situations.



### FRONT ROPS BAR

This protects the operator from the risk of falling. It can also be folded to accommodate different heights for transport, etc.

※ROPS (Rollover Protective Structure)

This stands for "rollover occupant protective structure" and refers to a structure that protects the operator wearing a seat belt from danger when the machine rolls over.



### FOUR-WAY OIL PIPE

Four high-pressure hydraulic lines provide stable oil flow, ensuring smoother and more efficient attachment operation.



# RIPPA ATTACHMENTS



## PERFORMANCE MATCHED

It supports quick attachment changes, enabling one machine to handle digging, breaking, grabbing, drilling, leveling, and trenching. By adapting to different tasks, it boosts efficiency, reduces equipment and rental costs, and lowers labor dependency. More than just a machine, it's a personal engineering team ready to work anytime.

Visit [rippa.com](http://rippa.com)



### BUCKET

- Optional bucket sizes.
- weight: 15kg  
size: 45 × 20 × 40 cm
- weight: 22kg  
size: 45 × 40 × 40 cm
- weight: 29kg  
size: 45 × 60 × 40 cm
- weight: 36kg  
size: 45 × 80 × 40 cm



### MUD BUCKET

- Optional mud bucket sizes.
- weight: 16.5kg  
size: 35 × 40 × 40 cm
- weight: 21kg  
size: 35 × 60 × 40 cm
- weight: 27kg  
size: 35 × 80 × 40 cm
- weight: 32kg  
size: 35 × 100 × 40 cm



### SKELETON BUCKET

- Optional skeleton bucket sizes.
- weight: 31kg  
size: 45 × 60 × 40 cm



## RAKE

- Optional rake sizes.
- weight:16.5kg  
size:53 × 43 × 18 cm
- weight:22kg  
size:53 × 63 × 18 cm
- weight:28kg  
size:53 × 83 × 18 cm



## RIPPER

- Optional ripper size
- weight:12kg  
size:53 × 14 × 20 cm



## TILTING BUCKET

- Optional tilting bucket size
- weight:39.5kg  
size:72 × 60 × 30 cm
- weight:53kg  
size:72 × 80 × 30 cm
- weight:58kg  
size:72 × 100 × 30 cm



## LOG GRAPPLE

- Lightweight log grapple size  
weight:37kg  
size:50 × 45 × 54 cm
- Hydraulic rotating log grapple size  
weight:117kg  
size: 50 × 80 × 93 cm



## HYDRAULIC BREAKER

- Hydraulic breaker size
- weight:79kg  
size:66 × 30 × 40 cm



## LAWN MOWER

- Lawn mower size
- weight:115kg  
size:110 × 46 × 65 cm



## ROTARY DRILL

- Optional rotary drill sizes.  
Weight: 50kg  
Length: 130cm Diameter: 15cm
- Weight: 51kg  
Length: 130cm Diameter: 20cm
- Weight: 53kg  
Length: 150cm Diameter: 30cm
- Weight: 54kg  
Length: 130cm Diameter: 30cm
- Weight: 55kg  
Length: 170cm Diameter: 20cm



### HEDGE CUTTER

- Optional hedge cutter sizes.  
weight: 62kg  
size: 150 × 38 × 40 cm



### COMPACTOR PLATE

- Optional compactor plate sizes.  
weight: 111kg  
size: 34 × 65 × 57 cm



### HYDRAULIC THUMB

- Optional hydraulic thumb sizes.  
weight: 21.5kg  
weight: 26kg  
weight: 22.8kg



**Pool Digging**



**Driveway Repair**



**Drainage Trenching**



**Stump Removal**



**Tree Planting**



**Snow removal**



**Land Leveling**



**Fence Installation**

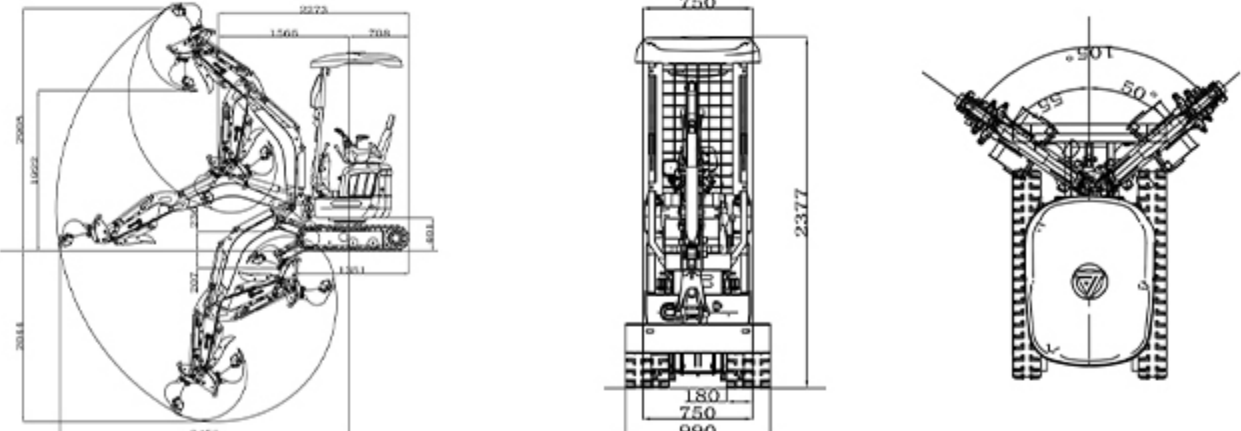


**Small Foundations**



**Farm Construction**

## DETAILED PARAMETER CONFIGURATION

Basic parameters		
Machine Weight/Operating Weight	1240kg/1323kg	2734lb/2917lb
Bucket capacity	0.014 m <sup>3</sup>	0.494ft <sup>3</sup>
Travel speed low/high	0-1.8/0-2.8 km/h	0-1.1/0-1.74mph
Gradeability	30 %	30%
Ground pressure	26.79 kpa	3.89psi
Maximum digging force	9.8 kN	2203lbf
Maximum digging radius	3456 mm	136.1in
Maximum digging depth	2044 mm	80.5in
Maximum digging height	2905 mm	114.4in
Maximum dumping height	1923 mm	75.8in
Maximum deflection angle	105°	105°
Track extension range	750-990 mm	29.5-39in
Body		
Transport length	2273mm	89.5in
Transport width	849mm	33.4in
Transport height	2377mm	93.6in
Counterweight ground clearance	401mm	15.8in
Bucket width	400mm	15.7in
Boom length	1450mm	57.1in
Arm length	880mm	34.6in
Bulldozer blade width	750-990mm	29.5-39in
Engine		
Engine brand	Kubota	Kubota
Engine model	D722	D722
Maximum power	10.2kW	13.7hp
Maximum speed	2500 rpm	2500rpm
Displacement	0.719L	0.19gal
Number of cylinders	3	3
Cooling method	Water-cooled	Water-cooled
Engine oil change amount	2.5L	0.66gal
Fuel form	Diesel	Diesel
Fuel grade	0/-10	0/-10
Theoretical fuel consumption	1.1-1.5L/h	0.29-0.40gal
Hydraulic system		
Main pump type/model	5ml/r + 5ml/r + 3ml/r	
Multi-way valve	THD12 multi-way valve	
Multi-way valve brand	Tengfei	
Rated set pressure (Mpa)	18MPa	
Maximum set pressure (MPa)	18.5MPa	
Travel hydraulic motor type/model	WDM-390 Dual-Speed Travel Motor	
		

Unit: mm

### Shandong Rippa Machinery Group Co., Ltd.

Address: No. 39, Guang'an Road, Lihang Sub-district Office, High-tech Zone, Jining City, Shandong Province.

Some specifications are based on engineering measurements and may differ from actual conditions. Specifications are for comparison purposes only and are subject to change without notice. Specifications of individual RIPPA devices may vary due to normal variations in design, manufacturing, operating conditions and other factors. Some images of RIPPA devices are not limited to standard packages.



**RIPPA**<sup>®</sup>

# EXCAVATOR PARTS PACKAGE LIST

ONE-STOP PARTS SOLUTION, SAVING YOU TIME, EFFORT, AND MONEY.

**Note:** Product images are for reference only. Actual parts may vary in appearance depending on the excavator model, engine configuration, and production batch. Please refer to the part number (Coding) or contact RIPPA before ordering.



SELECTED HIGH-QUALITY ACCESSORIES



STABLE AND RELIABLE PERFORMANCE



REDUCE MAINTENANCE COSTS



BUYING IN BULK OFFERS BETTER DEALS

## — R13 PRO (Kubota) PARTS LIST —

<p><b>Routine maintenance parts</b></p>	<p>Air Filter Element x 3 LP0111010004</p>	<p>Oil Filter Element x 3 LP0111020180</p>	<p>Diesel Fuel Filter Element x 3 LP0111020179</p>	<p>Pilot Hydraulic Filter Element x 3 LP0116020136</p>	<p><b>Why choose pack ?</b></p> <ul style="list-style-type: none"> <li>✓ Comprehensive coverage of commonly used accessories</li> <li>✓ Original factory standards, quality guaranteed</li> <li>✓ Reduce downtime and improve efficiency</li> <li>✓ Package deals, great value!</li> </ul>
	<p>Return Hydraulic Oil Filter Element x 3 LP0115030044</p>	<p>Grease Fitting x 3 LP011109254</p>	<p>Bucket Tooth x 3 LP0111080032</p>		
<p><b>Oil tank</b></p>	<p>Boom Cylinder x 1 LP0115010061</p>	<p>Stick Cylinder x 1 LP0115010207</p>	<p>Bucket Cylinder x 1 LP0115010208</p>		
<p><b>Walking and Turning System</b></p>	<p>Track Adjuster Screw x 1 LP0102070016</p>	<p>Guide Wheel x 1 LP0102070002</p>	<p>Starter Motor x 1 LP0111020200</p>		
<p><b>Electrical Components</b></p>	<p>Main Power Switch x 1 LP0106040064</p>	<p>Key Switch x 1 LP0106040002</p>	<p>Telescopic Solenoid Valve x 1 LP0115030028</p>		
				<p>Scan the QR code now for inquiries and ordering.</p>	