



**RIPPA®**

# RS20 | SKID STEER LOADER WITH CAB AND ATTACHMENTS





## RS20: EXCLUSIVE FEATURES

With greater operating capacity, reinforced hydraulics, and a heavy-duty design, the RS20 delivers stronger lifting power, smoother control, and long-lasting durability. Its spacious cab and clear visibility ensure safe and efficient operation on any worksite.



### ENGINE

#### KUBOTA V2607 ENGINE, RATED POWER 35.5KW (47.6HP)

- High-Efficiency power output
- Low fuel consumption
- Low noise & vibration



### PUMP

#### FOUR-PUMP HYDRAULIC SYSTEM

- Two dual closed-circuit pumps, an internal charge pump, and Load-sensing piston pump
- Flow rates of 99+ 99 + 32.8 + 99L/min
- Smooth operation, excellent compound action



### VALVE

#### LOAD-SENSING MULTI-SECTION VALVE

- Automatically adjust flow and pressure
- Responsive handling with smooth multi-tasking.
- Less heating, longer lifespan
- Eco-friendly and fuel-saving, reducing overall operating costs





# RS20

## RIPPA

### TRACK

#### INTEGRATED TRACK DESIGN

- Optional tracked or wheeled version
- High driving speed, low ground resistance, and agile steering
- High operating efficiency on hard, flat surfaces





## POWER & PERFORMANCE





## KEY FEATURES



- » Kubota V2607 engine, rated at 35.5 KW (47.6 HP), delivers strong power with low fuel consumption, reliable performance, and easy maintenance.
- » Hydraulic pump directly connected to the engine reduces maintenance.



- » Combining fast loading with efficient operation, with powerful hydraulics and precise control, you can easily move heavy objects, saving time and labor. The maximum unloading height 2250 mm, and the maximum loading capacity 2000 kg.



- » 4064 kg(8959 lb) combined with 329.8 L/min(87.1 gpm) main pump hydraulic flow make for a powerful and productive skid steer loader.



- » The 1850mm body width, offering excellent stability and maneuverability for efficient operation even in tight or challenging spaces.
- » Equipped with a dual-speed travel motor, best-in-class travel speed of 10km/h (6.21 mph).



# OPERATOR CONTROLS



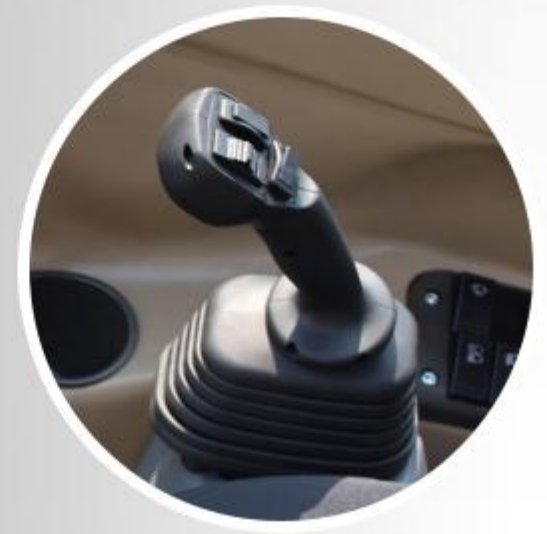
## KEY FEATURES



- » Spacious cab with side-opening door and protective mesh ensures easy access, clear visibility, and safer operation.
- » The comfort seat reduces vibration and fatigue, improving control and efficiency.



- » Centralized switch design greatly improves equipment operation convenience and driver work efficiency.
- » Ergonomic joystick and panel layout ensures easy operation and comfort for drivers of all sizes.







## KEY FEATURES



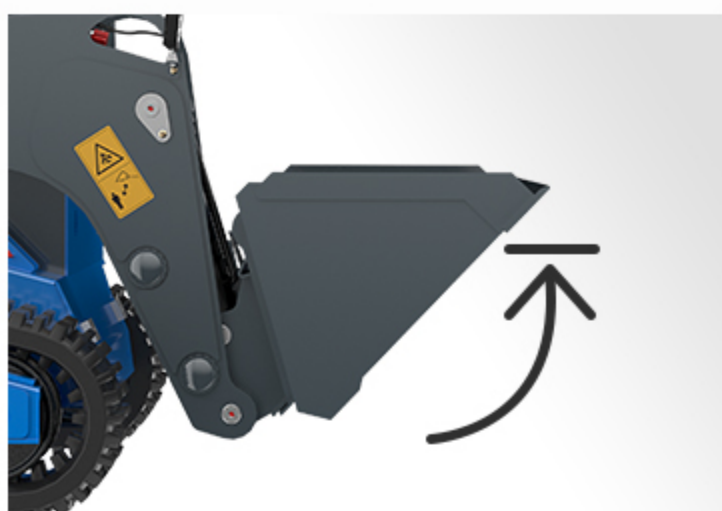
- » 1 group of 3 attachment oil circuits enables simultaneous and precise operation of multi-functional attachments.
- » Auxiliary hydraulic flow of 99L/min (26.2 gpm) provides strong power to ensure efficient attachment operation.



- » The bucket vertical lifting function enables the bucket to maintain vertical movement during the lifting process, preventing material from spilling and improving loading stability.



- » The floating bucket function allows the bucket to automatically adjust its angle as the ground rises and falls, keeping the bucket close to the ground during operation.
- » Suitable for cleaning, leveling and easily following uneven roads, improving construction efficiency.



- » The bucket auto-leveling function maintains the bucket angle constant when rising to prevent material spillage.
- » Improves operational stability and precision, making it particularly suitable for handling and loading operations.



# COMFORT & CONVENIENCE



## KEY FEATURES



- » The RS20 features a large-capacity heatsink with excellent heat dissipation performance.
- » The double-row fan is located above the rear of the machine, which can quickly dissipate heat to the engine and improve work efficiency.



- » Warning lights improve safety and visibility, while outdoor light sensor clear vision and precise work at night.







## KEY FEATURES



- » The quick-change device can quickly and safely switch between various attachments
- » Regular inspection, lubrication and rust prevention maintenance can significantly extend its service life.



- » Available in both track and wheel configurations, the machine offers versatility for different terrains.
- » Tracks give better stability on soft ground, while wheels provide higher speed and easier maneuvering on hard surfaces.



- » Neatly arranged boom hydraulic lines ensure efficient flow, easy maintenance, and reliable performance.



- » The LCD multi-function display more intuitively displays various parameter information such as machine fuel volume, power, temperature, time, speed, etc.





# RIPPA ATTACHMENTS



## PERFORMANCE MATCHED

When replacing auxiliary equipment such as trencher, stump grinder, log grapple, the process ensures you that the hydraulic requirements, weight, and width of your attachment matches your power unit's exact specifications.

Visit [rippa.com](http://rippa.com)



### DIRECT DIGGING

- Length: 2.3 m, Width: 1.3 m, Height: 0.7 m
- Weight: 170 kg



### ROCK BUCKET

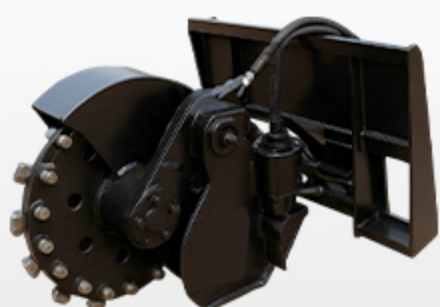
- Length: 1.9 m, Width: 0.75 m, Height: 0.67 m
- Weight: 190 kg



### TRENCHER

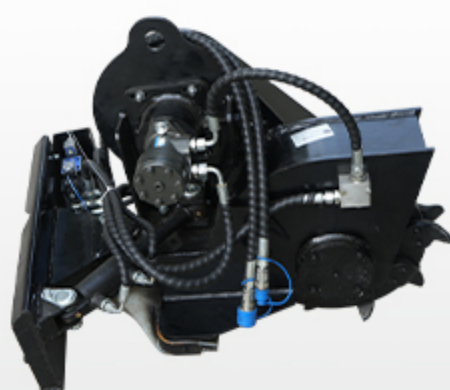
- Trenching Width: 300 mm
- Trenching Depth: 1000 mm
- Chain Type: Heavy-duty Chain
- Chain Tensioning Method: Bolt





## STUMP GRINDER

- Grinding Depth: 200 mm
- Grinding Wheel Diameter: 680 mm
- Number of Teeth: 40
- Required Hydraulic Flow: 50 L/min
- Rotation Speed: 1800 rpm



## ELECTRIC SWING-HEAD STUMP GRINDER

- Grinding Depth: 200 mm
- Grinding Wheel Diameter: 680 mm
- Number of Teeth: 40
- Swing Function
- Required Hydraulic Flow: 50 L/min
- Rotation Speed: 1800 rpm



## ROTATING LOG GRAPPLE

- Rotation angle: 360°
- Control method: Hydraulic



## ENCLOSED SWEEPER

- Sweeping Width: 1800 mm
- Brush Material: PET
- Brush Speed: 200–350 rpm
- Hydraulic Motor Model: 2K-245
- Collection Box Capacity: 0.5 m<sup>3</sup>



## MOWER

- Cutting Width: 1200 mm
- Blade Type: Manganese Steel Blade
- Number of Blades: 2
- Protective plate: Equipped
- Length: 1.45 m, Width: 1.4 m, Height: 0.85 m
- Weight: 193 kg



## ROLLER

- Roller Diameter: 800 mm
- Roller Width: 1800 mm







## BRUSH CUTTER

- Cutting Diameter: 1500 mm
- Blade Material: Manganese Steel Blade
- Required Hydraulic Flow: 50 L/min
- Suitable Vegetation: Shrubs with diameter less than 50 mm



## SNOW BLOWER

- Snow throwing direction is adjustable
- Snow Collection Width: 1500 mm
- Auger Diameter: 650 mm
- Length: 1.8 m, Width: 1.3 m, Height: 1.95 m, Weight: 300 kg



## DOZER BLADE

- Blade Width: 1800 mm
- Blade Height: 900 mm
- Maximum Dozing Angle: 45°
- Hydraulic Tilt Function
- Material: 45 Steel
- Length: 1.85 m, Width: 0.8 m, Height: 1.0 m, Weight: 200 kg



## ROTARY TILLER

- Working Width: 1200 mm
- Tilling Depth: 300 mm
- Rotor Speed: 350 rpm
- Number of Blades: 50
- Required Hydraulic Flow: 50 L/min



## SWEEPER

- Sweeping Width: 1800 mm
- Brush Material: PET
- Brush Speed: 200–350 rpm
- Hydraulic Motor Model: 2K-245



## 4 IN 1 BUCKET

- Bucket Capacity: 0.4 m<sup>3</sup>
- Maximum Opening Width: 1500 mm
- Number of Hydraulic Cylinders: 2
- Length: 1.95 m, Width: 1.15 m, Height: 0.91 m
- Weight: 270 kg





## BREAKER

- Length: 1.45 m, Width: 1.25 m, Height: 0.7 m
- Weight: 320 kg



## LAND LEVELER

- Length: 1.48 m, Width: 1.4 m, Height: 0.65 m
- Weight: 65 kg



## LOG GRAPPLE

- Grabbing Capacity: 1 m<sup>3</sup>
- Opening Width: 1700 mm



## FORK

- Rated Load: 2000 kg
- Anti-spill Protection
- Fork Width Adjustment: Manual
- Adjustable Fork Distance: 1000 mm
- Length 1.3 m, Width 0.93 m, Height 0.4 m



## SIDE-SHIFT PALLET FORK

- Rated Load: 2000 kg
- Side Shift Range: 1000 mm
- Adjustment Method: Hydraulic
- Length: 1.35 m, Width: 0.93 m, Height: 0.45 m
- Weight: 260 kg



## HIGH DUMP BUCKET



## TRACTION DEVICE



## ROTARY DRILL

- 1200 mm length, 150 mm diameter
- Length: 1.3 m, Width: 1.0 m, Height: 0.6 m
- Weight: 180 kg

- 1200 mm length, 200 mm diameter
- Length: 1.3 m, Width: 1.0 m, Height: 0.6 m
- Weight: 185 kg

- 1200 mm length, 220 mm diameter
- Length: 1.3 m, Width: 1.0 m, Height: 0.6 m
- Weight: 185 kg

- 1200 mm length, 250 mm diameter
- Length: 1.3 m, Width: 1.0 m, Height: 0.6 m
- Weight: 190 kg

- 1200 mm length, 300 mm diameter
- Length: 1.3 m, Width: 1.0 m, Height: 0.6 m
- Weight: 205 kg

- 1200 mm length, 400 mm diameter
- Length: 1.3 m, Width: 1.1 m, Height: 0.6 m
- Weight: 220 kg

- 1200 mm length, 450 mm diameter
- Length: 1.3 m, Width: 1.2 m, Height: 0.6 m
- Weight: 230 kg

- 1200 mm length, 600 mm diameter
- Length: 1.3 m, Width: 1.4 m, Height: 0.75 m
- Weight: 260 kg



**LIFTING DEVICE**



**BACKHOE**



**HORIZONTAL LOG SPLITTER**



**LOG SPLITTER**



**WOOD CHIPPER**



**VIBRATORY PLOW**





**SOIL RENOVATOR**



**MIXING BUCKET**



**MIXING BARREL**



**RIPPER**



**TRENCH FILLER**



**GRAPPLE BUCKET**



**STUMP BUCKET**



**LAWN AERATOR**

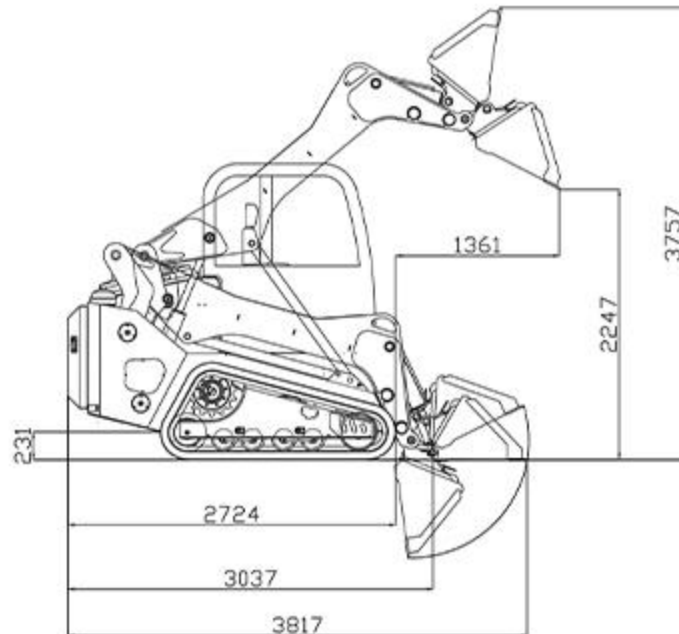
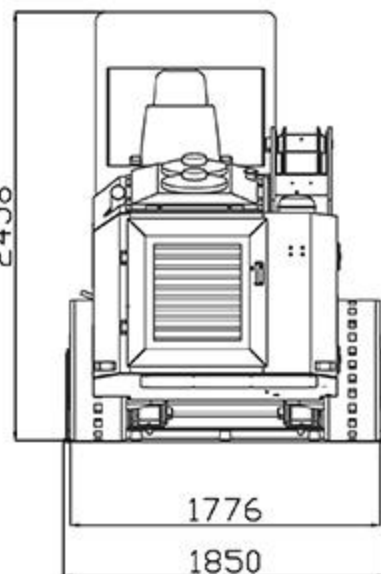


**LAND CLEARING RAKE**





DETAILED PARAMETER CONFIGURATION

Basic performance parameter		
Machine working weight	4064kg	8959 lb
Bucket capacity	0.4m³	14.1 ft³
Rated load mass (safe load)	1050kg	2310 lb
Maximum load mass	2000kg	4409 lb
Travel speed low/high speed	0-5/0-10km/h	0-3.1/0-6.2mph
Gradeability	25%	25%
Ground pressure	52.16kpa	7.57psi
Maximum unloading height	2250mm	88.6in
Maximum loading height	3750mm	147.6in
Maximum unloading distance	1360mm	53.5in
Minimum ground clearance	230mm	9.1in
Body		
Transport length - with bucket (mm)	3820mm	150.4in
Transport length - without bucket (mm)	3040mm	119.7in
Transport width (mm)	1850mm	72.8in
Transport height (mm)	2460mm	96.9in
Bucket width (mm)	1850mm	72.8in
Engine		
Engine brand	Kubota	Kubota
Engine model	V2607	V2607
Maximum horsepower	47.6hp	48.3ps
Maximum power	35.5kw	35.5kw
Maximum speed	2200rpm	2200rpm
Displacement	2.615L	0.691gal
Number of cylinders	4	4
Cooling method	Water cooling	Water cooling
Engine oil change amount	9.6L	2.54gal
Fuel form	Diesel	Diesel
Fuel grade	0/-10	0/-10
Theoretical fuel consumption	9.7L/h	2.56gal
Hydraulic system		
Main pump type/model	Double Closed-Circuit Pump V90C47H3A0	
Main pump brand	Hengli	
Multi-way valve brand	Lezhuo	
Travel hydraulic motor type	High-Speed Plunger Motor LX21VR45	
Travel motor brand	Lezhuo	
<div><div></div><div></div><div>Unit: mm</div></div>		

Shandong Rippa Machinery Group Co., Ltd.  
Address: No. 39, Guang'an Road, Liuhang Sub-district Office, High-tech Zone, Jining City, Shandong Province.

Some specifications are based on engineering measurements and may differ from actual conditions. Specifications are for comparison purposes only and are subject to change without notice. Specifications of individual RIPPA devices may vary due to normal variations in design, manufacturing, operating conditions and other factors. Some images of RIPPA devices are not limited to standard packages.

