



RIPPA®

MINI EXCAVATOR

R32 PRO



High performance, more choices.



Improved basic performance and provided many new options to better meet the needs of various fields.

MINI EXCAVATOR

R32 PRO



Powerful performance more efficient

Meets Euro 5 emission standards  

Possessing excellent perfection and reliability, it has improved its basic performance and provided many new options to better meet the needs of various fields.



PERFORMANCE

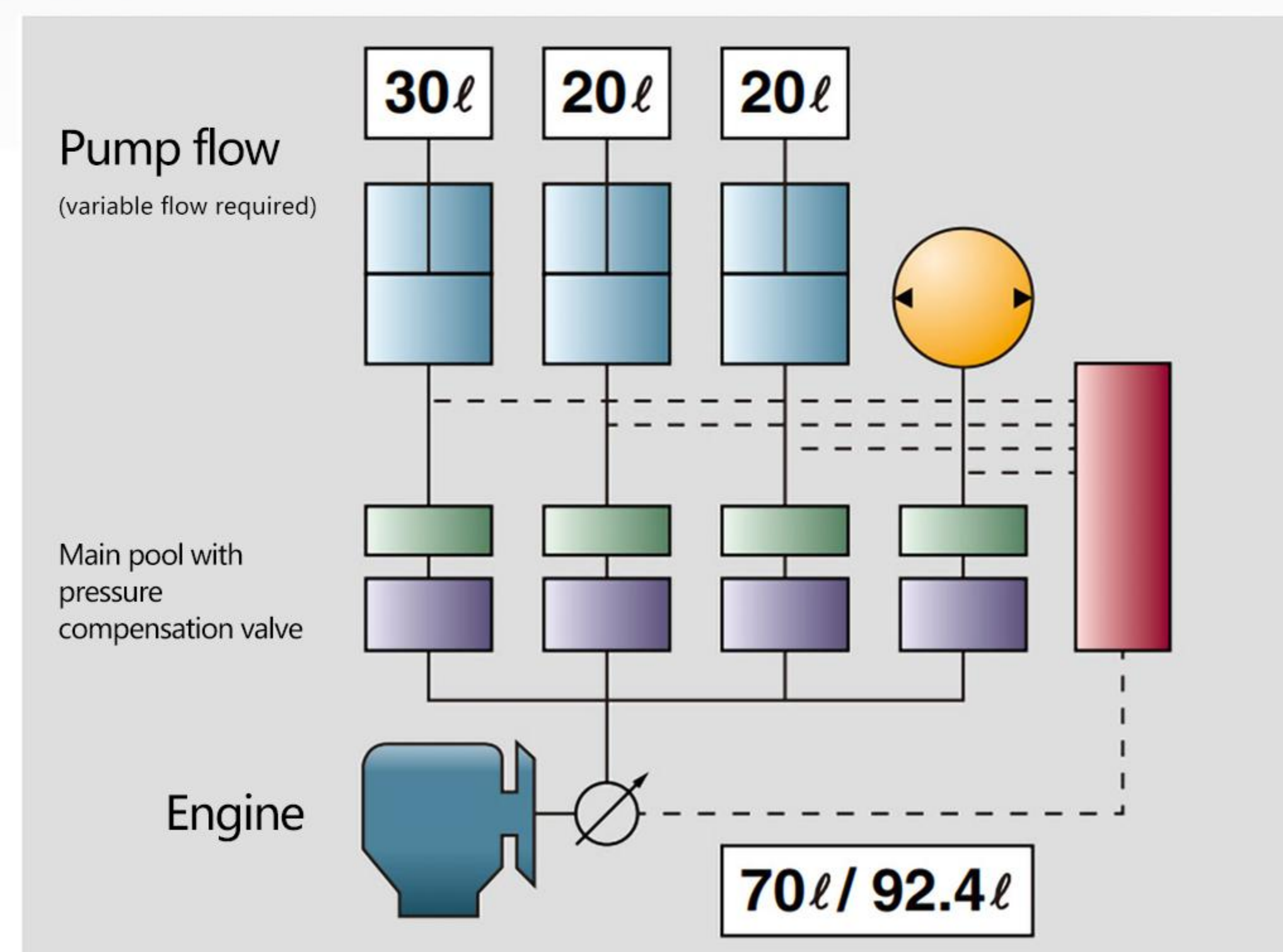
Pursuing higher performance of machines

More energy-saving and efficient

This system controls the hydraulic oil discharge flow rate by feeding back the "pump discharge pressure" and "actuator load pressure" to the LS regulator mounted on the hydraulic pump, and supplies only the required flow rate to the control valve.



- Smooth operation thanks to lever operation and discharge adjustment according to work load.



- Of the maximum discharge volume of 92.4L, it detects the required flow rate of 70L for the work equipment and discharges only 70L from the pump, so there is no waste.

Fuel efficiency
About 5% up



The hose is clean around

Restrain the looseness of boom cylinder hose to prevent damage.

Large LCD display

The LCD screen has a clear display and rich colors, ensuring a user-friendly interface. It can display the key operating parameters of the excavator, such as engine speed, hydraulic pressure, fuel level, temperature, etc., allowing the operator to grasp the equipment status at any time and improve work efficiency and safety.



Assistive device settings (standard mode)

The arm's raking position can be set in any direction, depending on the attachment. It can be easily set using the hand-held toggle button, so you can respond quickly when switching between buckets and flatbeds on site.

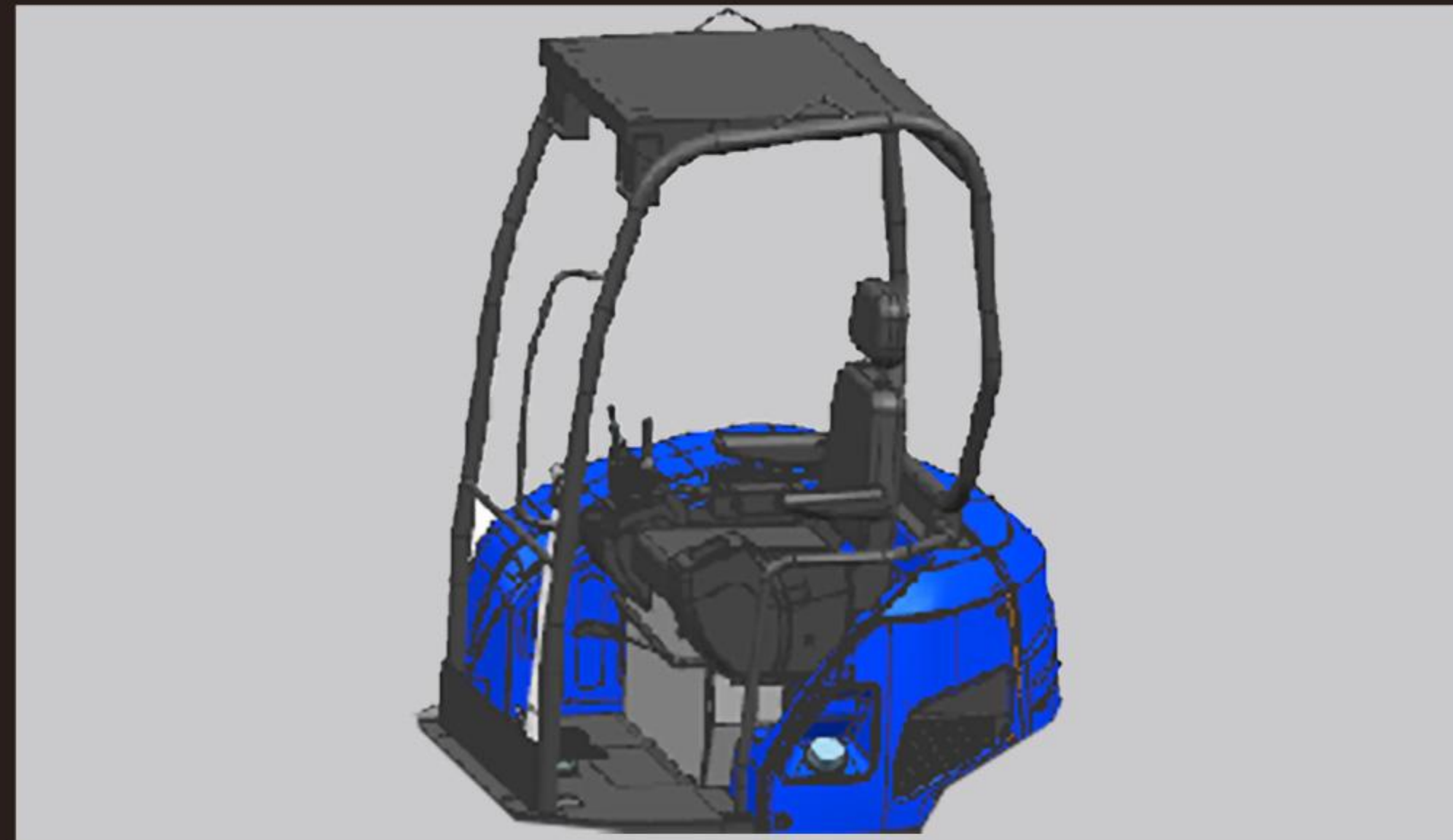


COMFORT/SAFETY

Safer, more comfortable and easier to operate

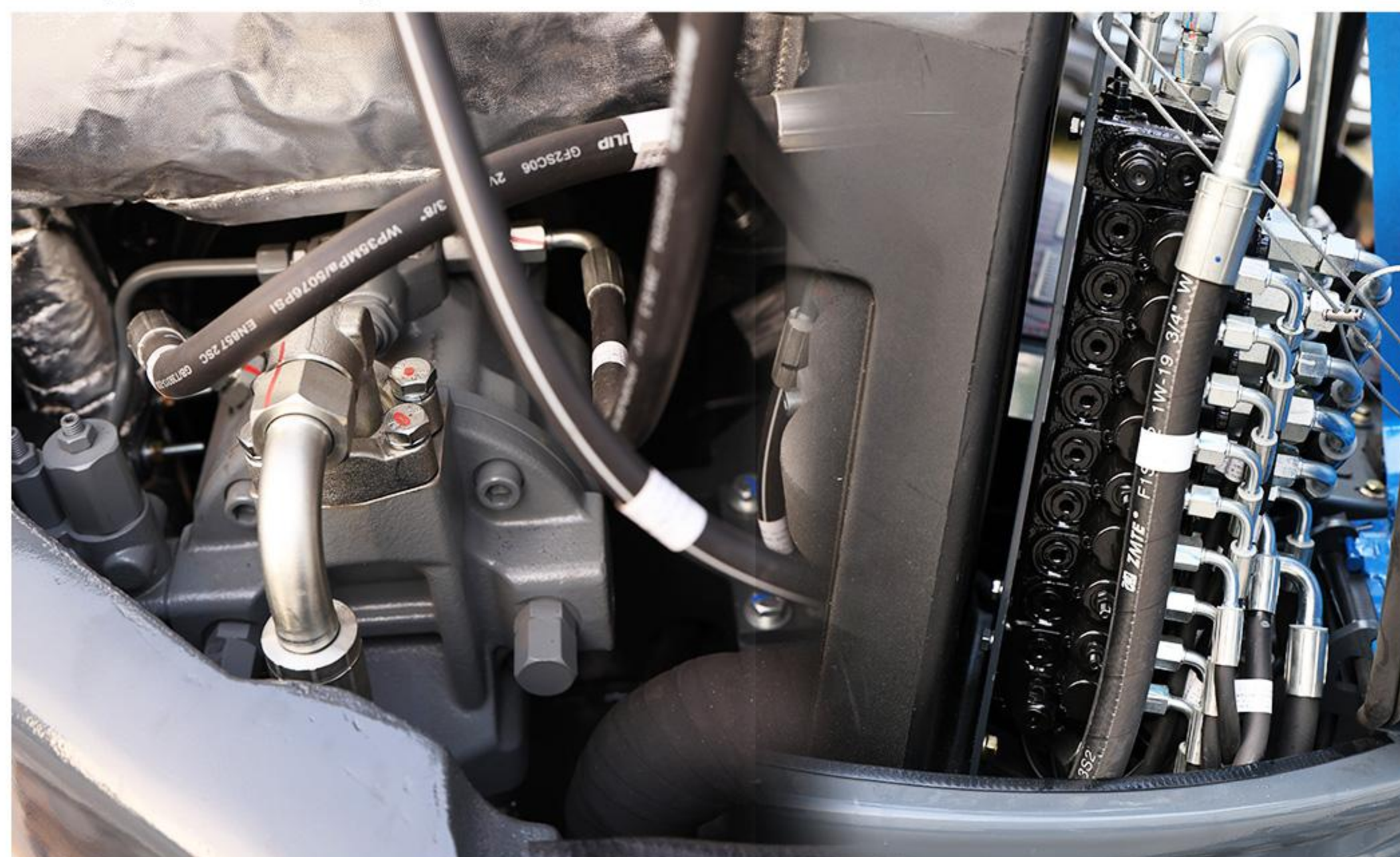
2-post ROPS/OPG · 4-post ROPS/OPG

Canopy, cab + seat belt



Comfortable control

The negative-sensitive plunger pump, the load-sensitive 9-way hydraulically controlled multi-way valve and the pilot operation work together to dynamically match system requirements through intelligent load sensing and pressure regulation mechanisms to achieve high efficiency and energy saving. At the same time, the precise control of the pilot operation is combined with the flexible allocation of the multi-way valve to ensure the accuracy and response speed of the operation, bringing users a smooth and comfortable control experience, and comprehensively improving system performance and energy efficiency.



Walking pedals

Pilot handle



Walking speed gear

Equipped with fast and slow speed function, the driver can manually select the driving speed mode, which is suitable for a variety of operating conditions. It is more conducive to production operation and is convenient and fast.

Launcher



Multi-function button



Hydraulic quick-change switch

The hydraulic quick-change switch has double insurance. Press the red switch to open the insurance, and then you can turn on the skip switch to control the hydraulic quick-change. If the red button is not turned, the rocker cannot



Numerous safe specifications to prevent damage and trouble

• Waterproof connector with cover

A waterproof connector harness with a cover that exhibits a high level of waterproof performance prevents troubles in the electrical system.

• Front hose interior

The internal type prevents damage to the hose during work.

• Front hose cover

Prevents the operator from being exposed to pressurized oil in the event of a hose burst.

• Glass fiber filter

A high-precision glass fiber filter is used for the hydraulic oil filter. It has excellent dust trapping performance and is safe with little deformation and damage.

• X frame + Katayama type track frame adopted

The crawler is good at removing mud, making it easy to remove soil and wash the car.

• Divided dozer hose

By splitting the hose in the middle, maintenance and replacement of the hose can be easily performed even in the event of unexpected damage.

• Auto glow

It automatically senses the water temperature and makes it possible to start the engine with the optimum and shortest glow time.

MAINTENANCE

A reassuring, safe design that offers excellent maintainability and durability.



- ① Air Filter
- ② Oil filter
- ③ Exhaust filter
- ④ Multi-way valve

Full open bonnet

The rear cover and side cover can be fully opened for easy maintenance.



Comfortable work space

Spacious boarding and alighting space with large doors make it easy to get on and off. It became smoother and the visibility of the foot during operation expanded. A bright and comfortable space contributes to reducing operator stress.

Air conditioner

The vehicle is equipped with air conditioning to provide a comfortable driving environment.



Cab specifications

LED light



OPTION

Adapt to various
working environments

Soft canopy specification (R32 Pro)



Roof type

Cab type

R32 Pro boom length: 2220 mm

R32 Pro Arm length: 1620 mm

*Long arms are reinforced on both sides only.

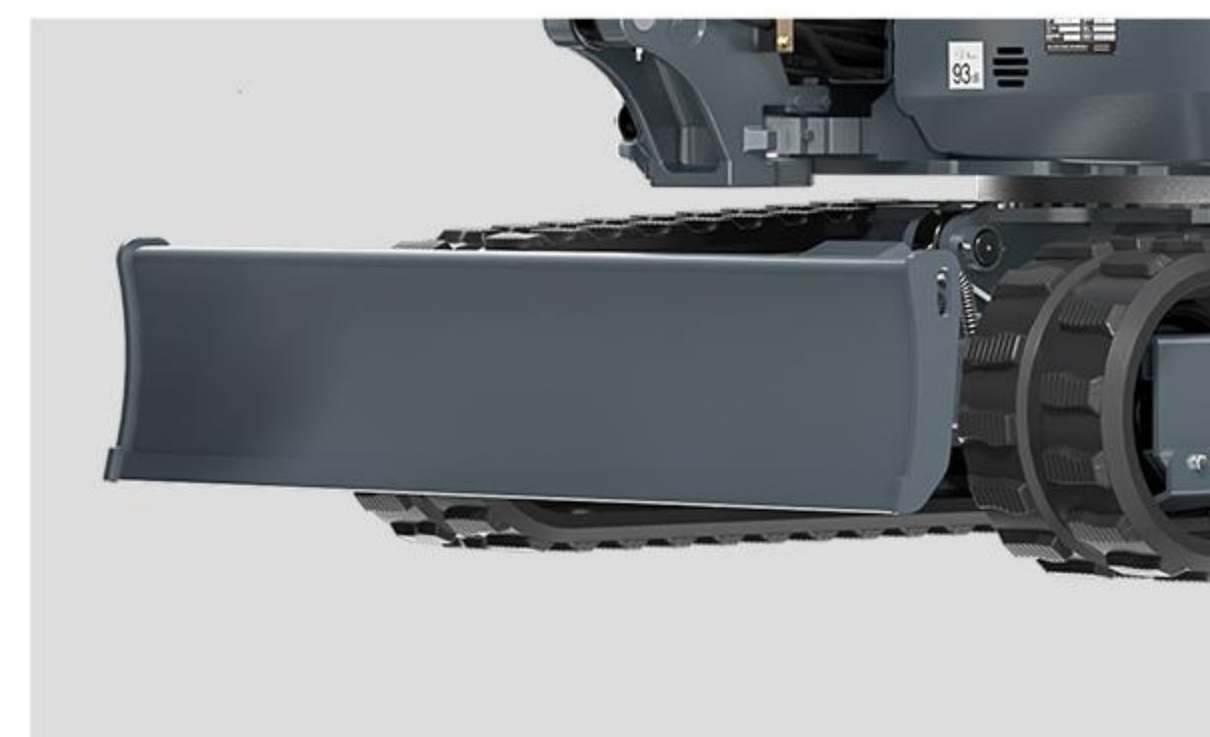
Rubber Engineering Tracks



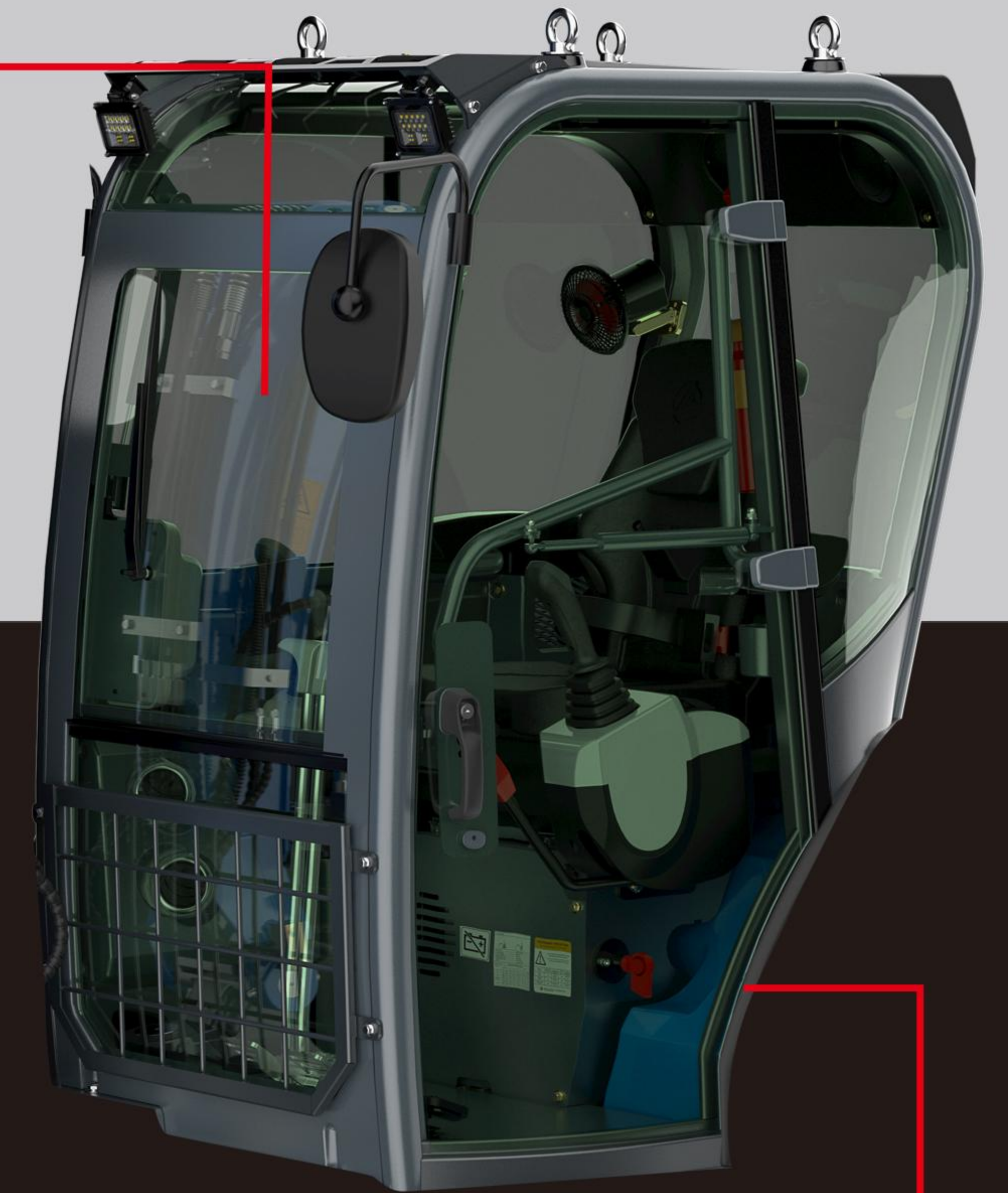
It uses industrial rubber tracks, which
are thick and durable and suitable
for a variety of terrains.

Large
Capacity Bucket

Bulldozer Blade



Openable windshield



Comfortable cab

Assistive devices

Hydraulic Breaker



Rotary Drilling



Hydraulic tilt bucket



Mud bucket



Grass rake



Scarifier

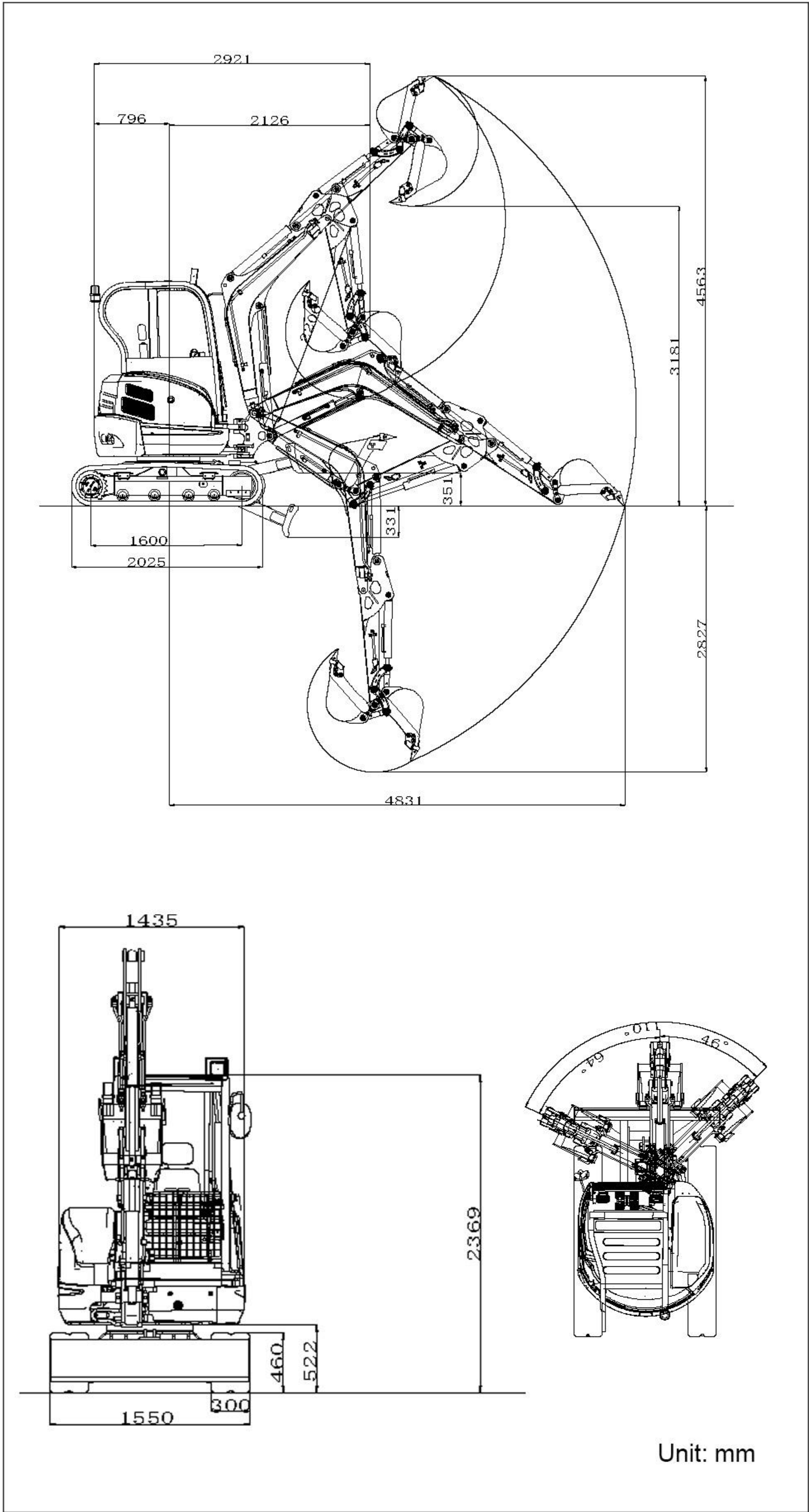


Rubber track (standard)

Steel tracks (optional)

Different crawler types can be selected to
adapt to various working environments.

■ SCOPE OF WORK



■ SPECIFICATION

Model			R32PRO
Basic parameters	Machine working weight	7082lb	3219kg
	Bucket capacity	2.83ft³	0.08m³
	Travel speed low/high speed	0-1.1/0-1.7mph	0-1.8/0-2.8Km/h
	Gradeability	30%	30%
	Ground pressure	5.2psi	36Kpa
	Maximum digging force	6070lbf	27kN
	Maximum digging radius	190.2in	4831mm
	Maximum digging depth	111.3in	2827mm
	Maximum digging height	179.6in	4563mm
	Maximum unloading height	125.2in	3181mm
	Maximum deflection angle	110°	110°
	Track extension range	-	-
Engine	Engine brand	Kubota	Kubota
	Engine model	V1505	V1505
	Maximum horsepower	24.4hp	24.8ps
	Maximum power	18.2kw	18.2kw
	Maximum speed	2300rpm	2300rpm
	Displacement	0.4 gal	1.5L
	Number of cylinders	4	4
	Cooling method	Water-cooled	Water-cooled
	Engine oil change amount	1.32 gal	5L
	Fuel form	Diesel	Diesel
	Fuel grade	0/-10	0/-10
	Theoretical fuel consumption	1.3-1.5L/h	1.3-1.5L/h
Body	Transport length	115in	2921mm
	Transport width	61in	1550mm
	Transport height	93.3in	2369mm
	Counterweight ground clearance	20.6in	522mm
	Bucket width	15.7in	400mm
	Boom length	86.6in	2220mm
	Arm length	65.4in	1620mm
	Bulldozer blade width	61in	1550mm

■ HYDRAULIC SYSTEM

Main pump type/model	Load sensitive piston pump/45
Main pump brand	Taifeng
Main pump maximum flow rate	99 L/min
Multi-way valve	Load sensitive 9-way hydraulic multi-way valve
Multi-way valve brand	Taifeng
Rated set pressure	18MPa

Maximum set pressure (Mpa)	20MPa
Travel hydraulic motor type	LTM03AX
Travel motor brand	Likechuan
Motor displacement	15.4/23.2ml/r
Slewing hydraulic motor type	Likechuan
Displacement	18.1ml/r

- Please read the instruction manual carefully and use the machine correctly.
- Always wear a seat belt when working. (ROPS specifications only)
- If you are operating construction machinery with a machine mass of less than 3 tons, you must take the "Special Training for Vehicle-Mounted Construction Machinery Operation" course beforehand. If the machine mass is 3 tons or more, you must take the "Vehicle-Mounted Construction Machinery Operation Skills Course".
- To prevent breakdowns and accidents, be sure to inspect the machinery regularly.
- Specific voluntary inspections are required to be carried out by an inspection company registered with the Minister of Health, Labor and Welfare or the Director-General of the Labor Standards Inspection Bureau.

> WE ARE RIPPA

Shandong Rippa Machinery Group Co., Ltd. is located in the Sixth Industrial Park, Jining high tech Zone, Shandong Province. It is a state-level high-tech enterprise with the right to import and export;

The company's staff are vigorous and enterprising, and constantly create the legend and glory of the rippa!



Shandong Rippa Machinery Group Co., Ltd.

Add: No. 39, Guang'an Road, Liuxing Sub-district Office, High-tech Zone, Jining City, Shandong Province.

Some specifications are based on engineering measurements and may deviate from actual conditions. Specifications are for comparison purposes only and are subject to change without notice. Specifications of individual RIPPA equipment will vary based on normal variations in design, manufacturing, operating conditions and other factors. Some pictures of RIPPA equipment are not limited to standard packages.



www.rippa.com