



**RIPPA**<sup>®</sup>

# RS04 | STAND-ON COMPACT LOADER AND ATTACHMENTS



# RS04: EXCLUSIVE FEATURES

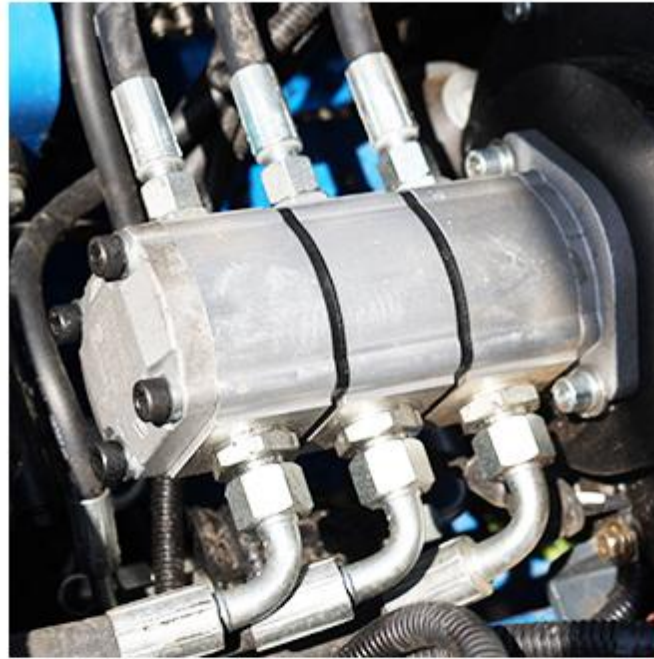
Compact yet powerful, the RIPPA RS04 Stand-on Skid Steer Loader delivers outstanding performance in a small footprint. Designed for agility and efficiency, it easily handles tough jobs in tight spaces — the perfect choice for construction, landscaping, and farm work.



## ENGINE

**KUBOTA Z482 ENGINE,  
RATED POWER 8.2KW  
(11.0HP)**

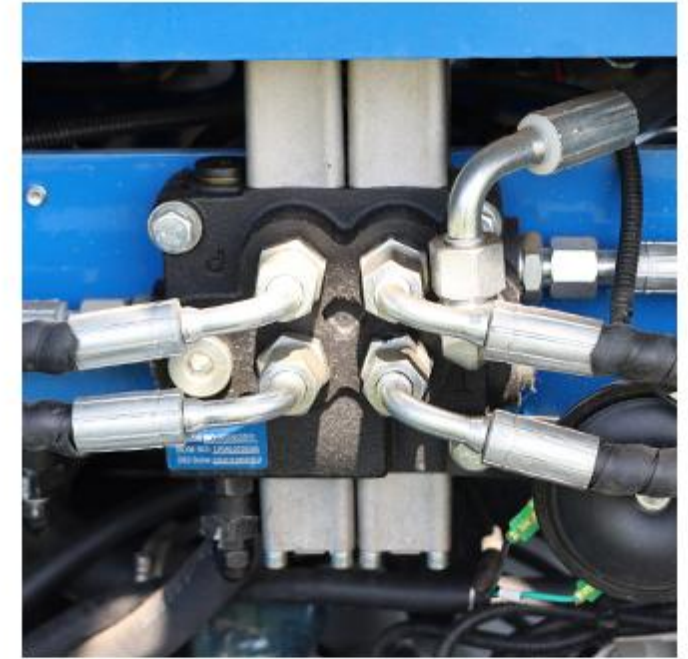
- High-Efficiency power output
- Low fuel consumption
- Low noise & vibration



## PUMP

**TRIPLE GEAR PUMP**

- Provides stable hydraulic flow
- Flow rates of 18 + 12 + 12 L/min
- Smooth operation, excellent compound action



## VALVE

**MECHANICAL VALVE**

- Simple and reliable, easy to operate with low failure rate.
- Durable, withstands harsh working conditions.
- Cost-effective, low maintenance and long service life.
- Smooth and responsive operation, consistent hydraulic performance under varying loads.



# RS04 RIPPA



## TRACK

### INTEGRATED TRACK DESIGN

- Optional tracked or wheeled version
- Smooth driving with little vibration
- Easily handle slopes and complex working conditions



# POWER & PERFORMANCE





## KEY FEATURES



- » Kubota Z482 engine, rated at 8.2 kw (11.0 HP), delivers strong power with low fuel consumption, reliable performance, and easy maintenance.
- » Hydraulic pump directly connected to the engine reduces maintenance.



- » Combining fast loading with efficient operation, with powerful hydraulics and precise control, you can easily move heavy objects, saving time and labor. The maximum unloading height 1553 mm, and the maximum loading capacity 480 kg.



- » 930 kg (2050 lb) combined with 42 L/min (11.2 gpm) main pump hydraulic flow make for a powerful and high-performance skid steer loader.



- » The 1150mm compact body allows easy maneuvering through tight spaces, making operations in confined areas smooth and efficient.
- » Best-in-class travel speed of 2.5 km/h (1.55 mph).



# OPERATOR CONTROLS



## KEY FEATURES



- » The control panel features a comfortable and efficient design, equipped with dual-hand levers and independent attachment control levers.

The instrument panel provides real-time monitoring of equipment status.



- » The attachment operating lever provides precise hydraulic control, enabling efficient and flexible operation of various attachments.
- » Provides hydraulic power for various attachments.





## KEY FEATURES



- » 2 group of 5 attachment oil circuits enables simultaneous and precise operation of multi-functional attachments.
- » Auxiliary hydraulic flow of 18 L/min (4.8 gpm) provides stable power for various attachments.



- » Modular Mobility System – 15-Minute Track/Wheel Conversion for All-Terrain Dominance.
- » The high-torque, low-speed travel motor can smoothly start and brake huge inertial loads, ensuring stable passage on complex terrain.



- » High-brightness LED work lights with wide coverage, shock-resistant, and energy-efficient for optimal visibility in any environment.



- » The floating bucket function allows the bucket to automatically adjust its angle as the ground rises and falls, keeping the bucket close to the ground during operation.
- » Suitable for cleaning, leveling and easily following uneven roads.

# COMFORT & CONVENIENCE



## KEY FEATURES



- » The lifting holes are sturdy in structure and reasonably located, making it easy to lift and load the whole machine safely.
- » The position of the lifting holes has been calculated based on the force to ensure stability.



- » The oil pipe adopts a built-in pipe arrangement, which can effectively protect the oil pipe, reduce wear and tear and prolong the service life of the oil pipe.





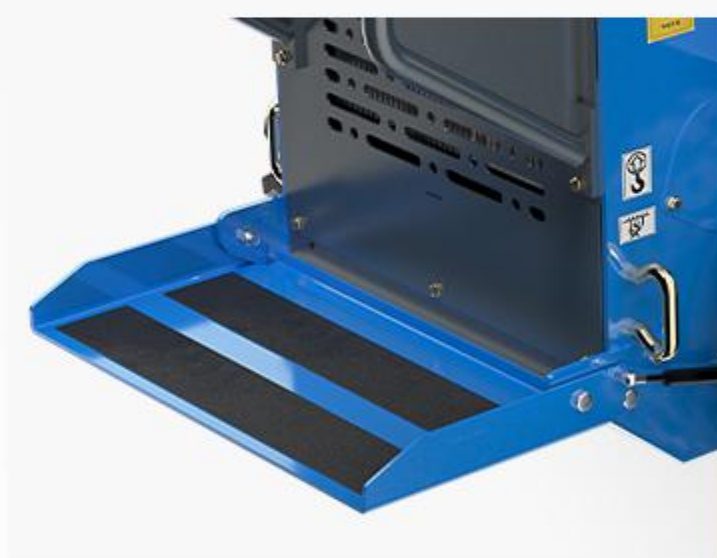
## KEY FEATURES



- » The quick-change device can quickly and safely switch between various attachments
- » Regular inspection, lubrication and rust prevention maintenance can significantly extend its service life.



- » The radiator ensures that the engine and hydraulic system operate stably at a safe temperature through efficient cooling.
- » Heat is efficiently dissipated through perforated channels on the back.



- » The non-slip foot pedals are equipped with gas spring support and can be easily flipped up.
- » Durable design ensures reliable performance in wet or muddy conditions.



- » The power switch safely turns on or off all electrical circuits to prevent misuse. Turning it off during long periods of inactivity prevents battery drain and extends battery life.

# RIPPA ATTACHMENTS



## PERFORMANCE MATCHED

When replacing auxiliary equipment such as trencher, stump grinder, log grapple, the process ensures you that the hydraulic requirements, weight, and width of your attachment matches your power unit's exact specifications.

Visit [rippa.com](http://rippa.com)



### DIRECT DIGGING

- Digging depth: 800 mm
- Bucket capacity: 0.15 m<sup>3</sup>
- Number of hydraulic lines: 1
- Length: 1.8 m, Width: 0.8 m, Height: 0.58 m
- Weight: 110 kg



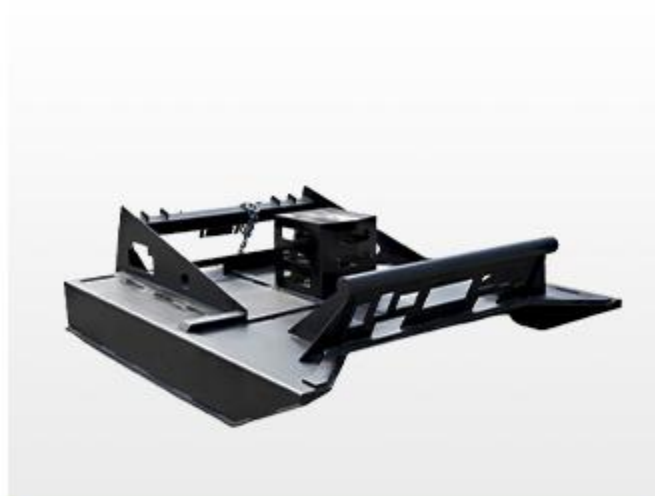
### GRAPPLE BUCKET

- Grab capacity: 0.25 m<sup>3</sup>
- Opening width: 1150 mm
- Length: 1.25 m, Width: 0.85 m, Height: 0.8 m
- Weight: 140 kg



### ENCLOSED SWEEPER

- Sweeping width: 1200 mm
- Brush material: Nylon and steel wire
- Brush speed: 200 rpm
- Hydraulic motor model: 2K-100
- Collection box capacity: 0.2 m<sup>3</sup>
- Length: 1.5 m, Width: 1.4 m, Height: 0.65 m
- Weight: 170 kg



## MOWER

- Cutting width: 1200 mm
- Blade type: Straight blade
- Number of blades: 3
- Protective panel configuration
- Cutting height adjustment: 500 mm
- Length: 1.35 m, Width: 1.4 m, Height: 0.85 m, Weight: 184 kg



## BRUSH CUTTER

- Cutting diameter: 1100 mm
- Blade material: Manganese steel
- Required hydraulic flow: 30 L/min
- Suitable vegetation: Shrubs with a diameter less than 30 mm
- Length: 1.6 m, Width: 1.3 m, Height: 0.5 m, Weight: 165 kg



## DOZER BLADE

- Blade width: 1150 mm
- Blade height: 600 mm
- Maximum dozing angle: 30°
- Hydraulic tilt function
- Material: Q235
- Length: 1.25 m, Width: 0.7 m, Height: 0.8 m, Weight: 130 kg



## 4 IN 1 BUCKET

- Bucket capacity: 0.25 m<sup>3</sup>
- Maximum opening width: 1100 mm
- Operation mode: Hydraulic
- Number of hydraulic cylinders: 2
- Material: Q235
- Length: 1.15 m, Width: 0.75 m, Height: 0.65 m, Weight: 140 kg



## LIFTING DEVICE

- Rated lifting capacity: 300 kg
- Maximum lifting height: 3 m
- Boom length: 2000 mm
- Hydraulic rotation function
- Safety valve setting pressure: 160 bar



## TRACTION DEVICE

- Connection type: Ball head connection
- Length: 0.7 m, Width: 0.5 m, Height: 0.3 m
- Weight: 32 kg



# RIPPA ATTACHMENTS



## MIXING BARREL

- Capacity: 0.25 L
- Material: Q235
- Discharge method: Mechanical
- Required hydraulic flow: 30 L/min
- Length: 0.7 m, Width: 0.9 m, Height: 0.7 m, Weight: 116 kg



## RIPPER

- Teeth quantity: 2
- Replaceable tooth tips
- Maximum loosening depth: 200 mm
- Length: 0.67 m, Width: 0.5 m, Height: 0.6 m
- Weight: 43 kg



## SWEEPER

- Sweeping width: 1200 mm
- Brush material: Nylon and steel wire
- Brush rotation speed: 200 rpm
- Hydraulic motor model: 2K-100
- Length: 1.55 m, Width: 1.15 m, Height: 0.9 m, Weight: 130 kg



## FORK

- Rated load: 500 kg
- Overflow protection device
- Fork width adjustment method: Manual
- Adjustable fork distance: 800 mm
- Length: 1.2 m, Width: 0.72 m, Height: 0.3 m, Weight: 92 kg



## SIDE-SHIFT PALLET FORK

- Rated load: 500 kg
- Side shift range: 50 mm
- Adjustment method: Hydraulic
- Length: 1.25 m, Width: 0.72 m, Height: 0.4 m
- Weight: 110 kg



## LOG GRAPPLE

- Grab capacity: 0.25 m<sup>3</sup>
- Opening width: 1150 mm
- Length: 1.1 m, Width: 0.85 m, Height: 0.8 m
- Weight: 150 kg



## ROTARY DRILL

- 800 mm length, 150 mm diameter
- Length: 0.9 m, Width: 0.5 m, Height: 0.58 m
- Weight: 110 kg

- 800 mm length, 200 mm diameter
- Length: 0.9 m, Width: 0.5 m, Height: 0.58 m
- Weight: 112 kg

- 800 mm length, 220 mm diameter
- Length: 0.9 m, Width: 0.5 m, Height: 0.58 m
- Weight: 112 kg

- 800 mm length, 250 mm diameter
- Length: 0.9 m, Width: 0.6 m, Height: 0.58 m



## ROCK BUCKET

- Length: 1.0 m, Width: 0.5 m, Height: 0.6 m
- Weight: 99 kg



## LAND LEVELER

- Length: 1.38 m, Width: 1.3 m, Height: 0.55 m
- Weight: 42 kg

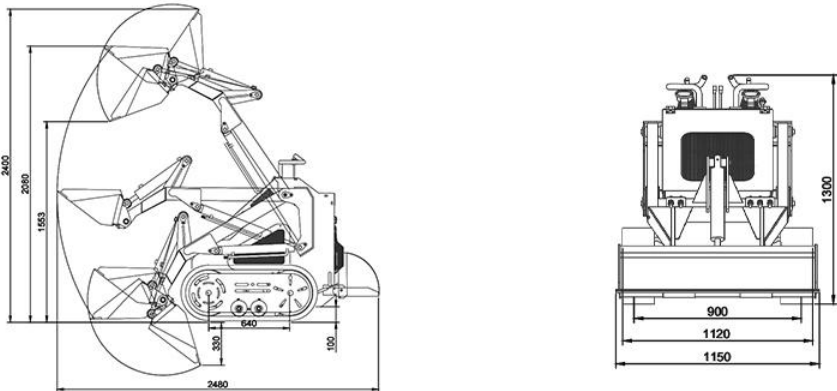


## BREAKER

- Length: 0.7 m, Width: 1.0 m, Height: 0.41 m
- Weight: 130 kg



## DETAILED PARAMETER CONFIGURATION

| Basic performance parameter  |                       |                     |
|--|-----------------------|---------------------|
| Machine working weight   | 930kg                 | 2050 lb             |
| Bucket capacity  | 0.15m <sup>3</sup>    | 5.3 ft <sup>3</sup> |
| Rated load mass (safe load)  | 240kg                 | 529.1 lb            |
| Maximum load mass  | 480kg                 | 1058.2 lb           |
| Travel speed low/high speed  | 0-2.5km/h             | 0-1.55mph           |
| Gradeability   | 25%                   | 25%                 |
| Ground pressure  | 25.17kpa              | 3.7psi              |
| Maximum unloading height   | 1553mm                | 61.2in              |
| Maximum loading height   | 2080mm                | 82.0in              |
| Maximum unloading distance   | 550mm                 | 21.7in              |
| Minimum ground clearance   | 108mm                 | 4.3in               |
| Body   |                       |                     |
| Transport length - with bucket (mm)  | 1970mm                | 77.6in              |
| Transport length - without bucket (mm)   | 1520mm                | 59.8in              |
| Transport width (mm)   | 1150mm                | 45.3in              |
| Transport height (mm)  | 1300mm                | 51.2in              |
| Bucket width (mm)  | 1150mm                | 45.3in              |
| Engine   |                       |                     |
| Engine brand   | Kubota                | Kubota              |
| Engine model   | Z482                  | Z482                |
| Maximum horsepower   | 11.0hp                | 11.23ps             |
| Maximum power  | 8.2kw                 | 8.2kw               |
| Maximum speed  | 3000rpm               | 3000rpm             |
| Displacement   | 0.479L                | 0.13gal             |
| Number of cylinders  | 2                     | 2                   |
| Cooling method   | Water cooling         | Water cooling       |
| Engine oil change amount   | 2.5L                  | 0.66gal             |
| Fuel form  | Diesel                | Diesel              |
| Fuel grade   | 0/-10                 | 0/-10               |
| Theoretical fuel consumption   | 0.8-1.2L/h            | 0.21-0.32gal        |
| Hydraulic system   |                       |                     |
| Main pump type/model   | Gear pump PGP64422H92 |                     |
| Main pump brand  | Tianjin Walking       |                     |
| Multi-way valve types  | Mechanical valves x3  |                     |
| Multi-way valve  | Tengfei               |                     |
| Travel motor brand   | Deston                |                     |
|  |                       |                     |
| Unit: mm   |                       |                     |

### Shandong Rippa Machinery Group Co., Ltd.

Address: No. 39, Guang'an Road, Liuhang Sub-district Office, High-tech Zone, Jining City, Shandong Province.

Some specifications are based on engineering measurements and may differ from actual conditions. Specifications are for comparison purposes only and are subject to change without notice. Specifications of individual RIPPA devices may vary due to normal variations in design, manufacturing, operating conditions and other factors. Some images of RIPPA devices are not limited to standard packages.



**RIPPA**<sup>®</sup>