



PROVIDE HIGH-QUALITY ENGINEERING MACHINERY PRODUCTS
AND MAKE THE WORLD FALL IN LOVE WITH MADE IN CHINA

R

WHEEL LOADER

RL20



**Hinged design of the machine,
with brand power, Soft roar,
elegant start, strong and
stable output power**

RL20 advantages in power, efficiency, versatility and value are driven by our robust features. Our compact articulated design uses less horsepower to do most jobs-that means less surface impact and lower operating costs. Equipped with Yuchai 4105 turbocharged engine, providing more power support for driving.

RIPPA
MULTIFUNCTIONAL LOADER

RL20



More powerful engine

The power is optimized and matched, with high fuel efficiency, large low-speed torque, strong power and high operating efficiency. An electronically controlled high-pressure common rail fuel system is used to achieve precise combustion control. Intelligently adjust the power curve to meet multiple working modes to achieve high efficiency and fuel saving.

Green and environmentally friendly

In addition to its outstanding horsepower and performance, it also has extremely low noise and vibration levels, excellent fuel efficiency, and meets the final version of Euro V and US Stage IV emission standards, contributing to environmental protection and reducing air pollution.

Compact hinge design

More flexible body, efficient integrated layout, and reduced energy loss during operation.



off-road tires

The core advantage of loader off-road tire is that it can adapt to various complex terrains. Strong grip, reduced idling in slippery environment and guaranteed effective transmission of power; Significantly improve loader trafficability on unpaved pavements for more stable and efficient operation.



Radiator

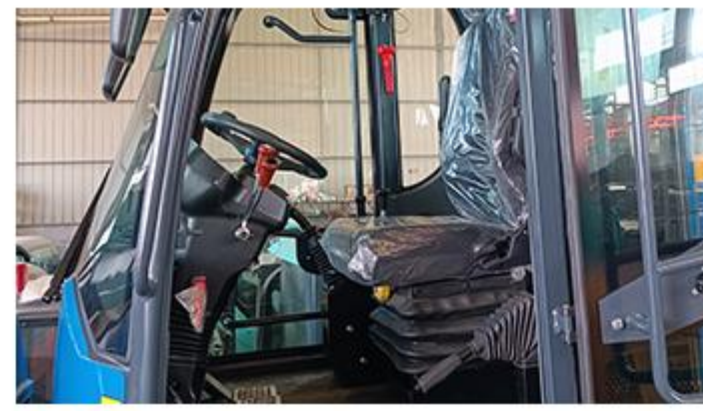
The radiator can balance the operating temperature of the engine and hydraulic system, ensuring the stable operation of the loader.



Dumping height
3500/3800mm

Even safer. Even more comfortable.

RL20 WHEEL LOADER

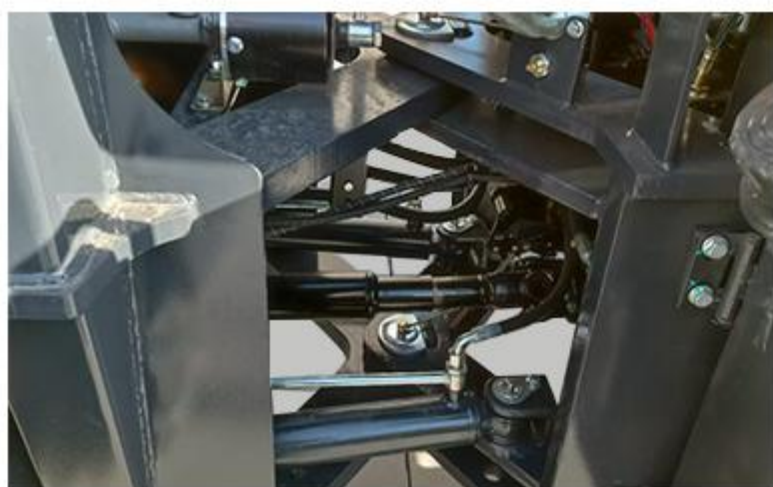


COMFORTABLE

Comfortable and spacious driver's cabin, rain and sun protection, clearly arranged control panel, centralized button design, intelligent dashboard, ergonomic multifunctional operating handle, allowing you to drive comfortably

LINKS AND DRIVES

The lightweight articulated structure and shaft transmission design of the frame, the articulated centering arrangement, strong power, small steering angle and turning radius, better passing ability, and flexible operation



SAFETY HYDRAULIC CYLINDER

The high-quality sealing design enhances safety. The hydraulic lifting cylinders of loaders mostly adopt a multi-level sealing structure, which can effectively prevent hydraulic oil leakage, avoid a sudden drop in lifting force caused by oil leakage, and prevent safety accidents due to the accidental falling of the bucket.

LARGE AND SMALL ARMS

The boom and arm (of the loader) feature enhanced thickness. They are made of high-quality materials, undergo anti-rust coating processes, and have key parts specially treated for corrosion protection.



LED HEADLIGHTS

The dustproof and waterproof design of the front headlights can block nighttime dew, rainwater, and other elements, preventing the lights from flickering or going out. This ensures stable and bright lighting for continuous nighttime operations and safeguards operational safety



