



RIPPA[®]

R57 PRO | MINI EXCAVATOR



R57 PRO: EXCLUSIVE FEATURES



ENGINE

KUBOTA V2607 ENGINE, RATED POWER 35KW

- High-Efficiency power output
- Low fuel consumption
- Low noise & vibration



PUMP

VARIABLE DISPLACEMENT PISTON PUMP

- Provides stable hydraulic flow
- Flow rates of 149.6L/min
- Keep the hydraulic system stable



VALVE

LOAD SENSING MULTI- PLEX VALVE

- Automatically adjust flow and pressure
- Responsive handling with smooth multi-tasking.
- Less heating, longer lifespan



R57 PRO RIPPA



TRACK

ENGINEERING RUBBER TRACKS

- Smooth driving with little vibration
- Easily handle slopes and complex working conditions



MOTOR

BUILT-IN WALKING MOTOR

- The motor and reducer are integrated into one design.
- The overall structure is more compact
- It is more durable than an exposed structure.



TOP PERFORMANCE



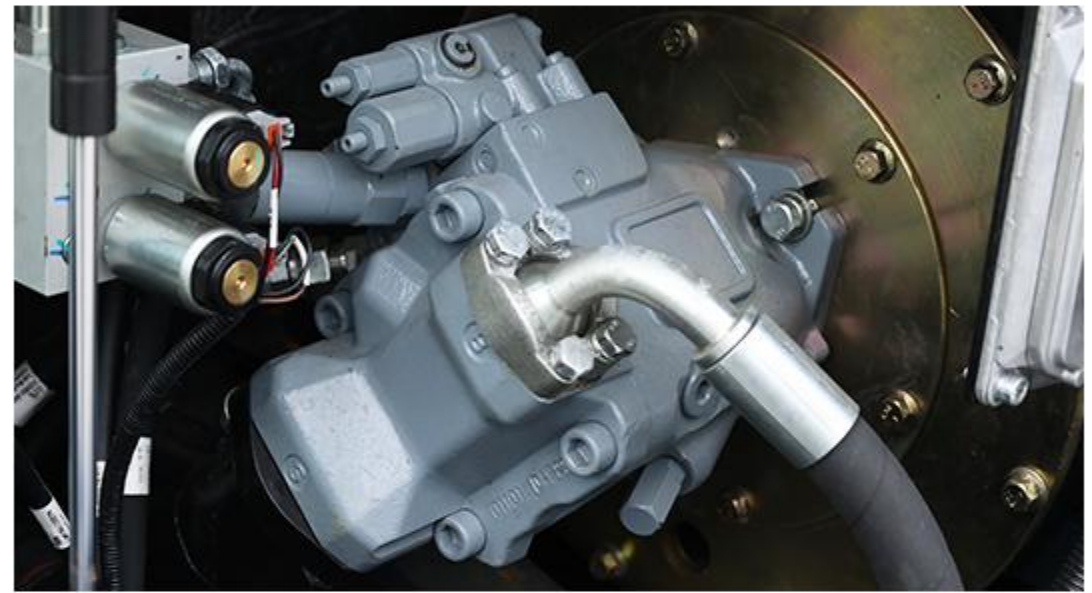


▶ TOP PERFORMANCE IN A VERSATILE PACKAGE

A compact & powerful machine for the best adaptability to any work site. Large hydraulic capacity of a tool carrier. Works in narrow spaces thanks an ultra-compact design and boom swing.

▶ MANEUVERABILITY

The smooth and precise hydraulic system can drive all the attachments needed on the construction site. The operator can control the flow proportionally. Pedal driving can be operated by manual lever. The two travel modes can be switched at any time, thereby enabling more precise, efficient, and stable multi-functional earthmoving operations.



▶ COMFORT

Low noise & vibration levels and excellent all-round visibility. Large glass door for easy access and better visibility. Fully adjustable heated air suspension seat, air conditioning with climate control as standard.



▶ EASY MAINTENANCE

Easy access from ground level to all components, filters and refilling points. The R57 PRO was designed to be easy to keep on the job. Offers easy access to filters, fluids and all service points — including the engine, pump package, valve bank, cooling system and plumbing. Quick and easy machine diagnosis allows you to monitor critical systems in real time from the LCD monitor in the cab.



FEATURES AND FUNCTIONS



» HIGHEST PERFORMANCE IN ANY WORK ENVIRONMENT

The advanced hydraulic system, combined with a powerful engine, provides the biggest digging and tractive forces for efficient operation. As a result, the R57PRO provides outstanding performance, work efficiency and the ability to adapt to any work environment

» POWERFUL DIGGING FORCE (BUCKET)

Powerful, efficient, and with increased digging force can face every job site condition.



» A MODEL WITH NOVEL FEATURE

Improved ergonomics, increased comfort and excellent all-round visibility, Improved reliability, using high-performance materials - combined with new methods of structural stress analysis - have increased component life expectancy, thus reducing running costs. Reduced maintenance increases the excavator's availability and lowers the operating costs

» KUBOTA V2607 (EPA4/EURO 5)

The R57 PRO has a powerful and eco-friendly heart, always providing high operating efficiency and pleasant working conditions.



▶ THE CABIN HAS BEEN ERGONOMICALLY DESIGNED WITH COMFORT IN MIND

The R57PRO are designed to provide you with the best possible working conditions. Its spacious interior offers a fully adjustable and comfortable seat. Comfortably seated, you have easy access to several storage compartments and a clear all-round view of the worksite. Noise and vibration levels are reduced while air conditioning allows you to maximise your productivity and return on investment.



▶ UPWARD OPENING DESIGN

Once activated, it provides an unobstructed view, allowing the driver to accurately observe the excavation location, making it especially suitable for delicate operations such as trench excavation and courtyard construction. It also enhances air circulation, improving comfort during summer or long-term operations. During construction, it facilitates direct communication between the operator and ground personnel, improving collaboration efficiency. In addition, when working indoors or in low-ceilinged spaces, it reduces glass reflections and obstructions, enhancing safety and operational flexibility.

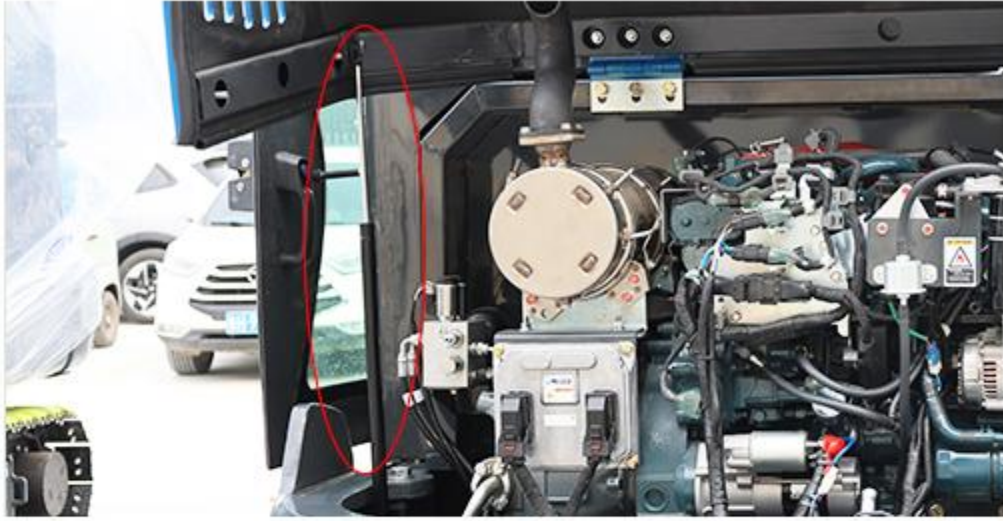


EASY TO MAINTAIN



MORE DURABILITY - LESS MAINTENANCE

The most advanced technology developed by RIPP A. Was integrated into the R57PRO excavators for powerful performance and simple, easy maintenance. This provides the operator with convenient maintenance check points and maximizes the R57PRO's work efficiency.



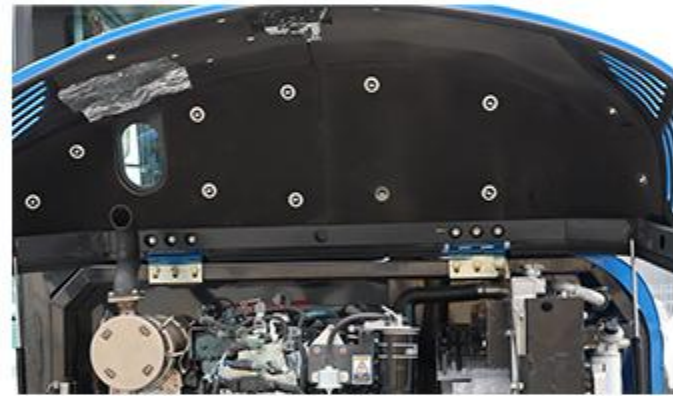
▶ ENGINE HOOD HYDRAULIC SUPPORT

No need for manual support, one-button opening saves effort and time, and improves maintenance efficiency. The hydraulic rod can firmly support the engine cover to avoid accidental falling, ensure the safety of maintenance personnel, and the support angle is reasonable, with larger inspection space, making daily maintenance and repair work smoother.



▶ TRACKS

The standard rubber tracks offer superior anti-slip and grip properties, minimizing damage to sidewalks and roads in urban environments. Optional steel tracks provide a robust structure suitable for heavy-duty conditions, supporting greater machine weight and workload while offering enhanced stability.



▶ ENGINE ROOM

The engine compartment is designed for easier service, and the sturdy sound-proofing inside the engine cover reduces the noise to provide a more comfortable environment for the operator and those working around the machine.



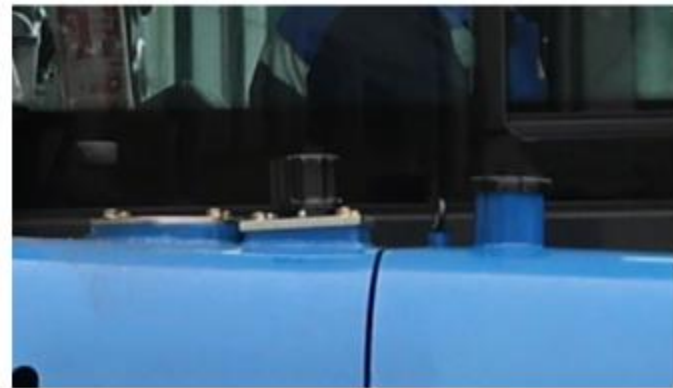
▶ MAINTENANCE ACCESS MADE SIMPLE

A battery cut-of switch makes it easy to disconnect the battery during long-term storage. The hour meter display can be easily checked from ground level - For extra accessibility and servicing convenience.



▶ AIR BREATHER

It can effectively block dust, sand and other impurities in the air, prevent them from entering the engine cylinder, avoid wear and failure, and extend the life of the engine.



▶ EXTERNAL FUEL CAP

The external lockable fuel tank cap makes refueling easier and safer. When the oil level reaches the minimum, a warning beep sounds for added convenience.



▶ GREASE PIPING

Integrated grease piping is designed for easy maintenance of the swing bearing and boom swing cylinder.



▶ OIL GAUGE

Hydraulic oil level can be easily checked through the gauge on the side of the hydraulic tank.

RIPPA ATTACHMENTS



PERFORMANCE MATCHED

It supports quick attachment changes, enabling one machine to handle digging, breaking, grabbing, drilling, leveling, and trenching. By adapting to different tasks, it boosts efficiency, reduces equipment and rental costs, and lowers labor dependency. More than just a machine, it's a personal engineering team ready to work anytime.

Visit rippa.com



BUCKET



MUD BUCKET



RIDDLE BUCKET



RAKE



RIPPER



TILTING BUCKET



LOG GRAPPLE



HYDRAULIC BREAKER



LAWN MOWER



HEDGE TRIMMER



ROTARY DRILLING RIG



ROTATING LOG GRAPPLE



RIPPA APPLICATION SCENARIOS



REPAIR A DRIVEWAY



STUMP REMOVAL



**DIG DRAINAGE
DITCHES**



**DIG A SWIMMING
POOL**



SNOW REMOVAL



LAND LEVELING



FENCE INSTALLATION



SMALL FOUNDATIONS



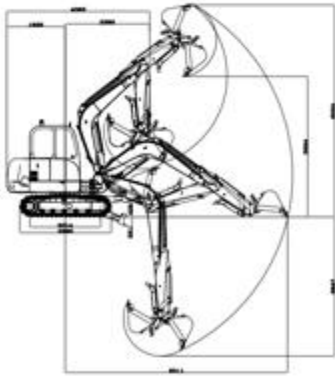
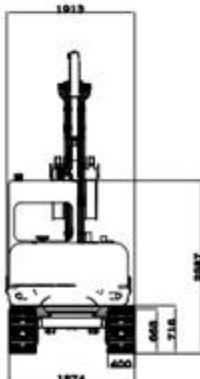
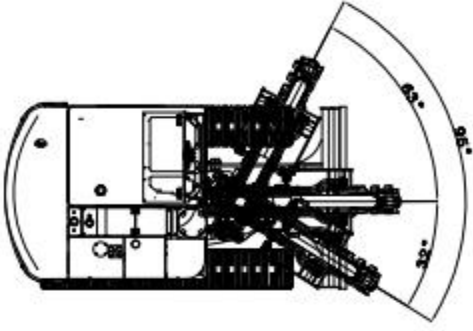
FARM BUILDINGS



TREE PLANTING

DETAILED PARAMETER CONFIGURATION

Basic parameters		
Machine Operating Weight	5775kg	12705lb
Bucket Capacity	0.175m ³	6.18ft ³
Travel Speed (Low/High Speed)	0-2.4/0-3.8km/h	0-1.5/0-2.4mph
Climbing Ability	35%	35%
Ground Pressure	35.4kpa	5.1psi
Maximum Digging Force	32KN	7194lbf
Maximum Digging Radius	6311mm	248.7in
Maximum Digging Depth	3947mm	155.5in
Maximum Digging Height	6024mm	237.3in
Maximum Unloading Height	3994mm	154.4in
Maximum Deflection Angle	95°	95°
Track Extension Range	-	-
Body		
Transport length	4052mm	159.6in
Transport width	1913mm	75.4in
Transport height	2587mm	101.9in
Counterweight ground clearance	716mm	28.2in
Bucket width	600mm	23.6in
Boom length	3000mm	118.2in
Arm length	1600mm	63in
Bulldozer blade width	1874mm	74in
Engine		
Engine Brand	Kubota	Kubota
Engine Model	V2607	V2607
Maximum Power	35kw	46.9hp
Maximum Speed	2200rpm	2200rpm
Displacement	2.615L	0.69gal
Number of Cylinders	4	4
Cooling Method	Water-cooled	Water-cooled
Engine Oil Change Quantity	6.1L	1.6gal
Fuel Type	Diesel	Diesel
Theoretical Fuel Consumption	9.72L/h	9.72L/h
Main pump type/model	Load-sensing variable displacement piston pump / 68	
Main pump maximum flow (L/min)	149.6L/min	
Multi-way valve	9-section hydraulic control multi-way valve	
Rated set pressure (Mpa)	22.5MPa	
Travel hydraulic motor type	TM07	
Slewing hydraulic motor type	ZHTE DH80	

Unit: mm

Shandong Rippa Machinery Group Co., Ltd.

Address: No. 39, Guang'an Road, Lihang Sub-district Office, High-tech Zone, Jining City, Shandong Province.

Some specifications are based on engineering measurements and may differ from actual conditions. Specifications are for comparison purposes only and are subject to change without notice. Specifications of individual RIPPA devices may vary due to normal variations in design, manufacturing, operating conditions and other factors. Some images of RIPPA devices are not limited to standard packages.



RIPPA®