



R13 PRO | MINI EXCAVATOR



R13 PRO: EXCLUSIVE FEATURES



ENGINE

KUBOTA D722 ENGINE, RATED POWER 10.2KW (13.7HP)

- High-Efficiency power output
- Low fuel consumption
- Low noise & vibration



PUMP

GEAR PUMP

- Provides stable hydraulic flow
- Flow rates of 32.5 L/min (8.6 gpm)
- Keep the hydraulic system stable



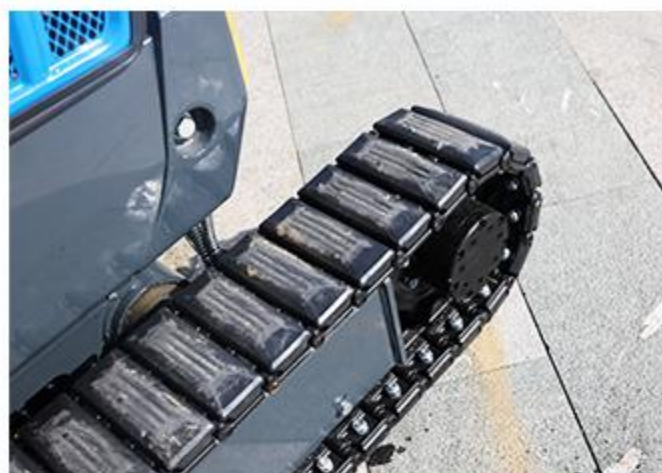
VALVE

HYDRAULIC AND MECHANICAL VALVE

- Easy and precise operation with responsive control
- Stable performance with smooth response
- Durable structure for reliable long-term use



R13 PRO RIPPA



TRACK

STEEL TRACK WITH RUBBER PADS

- Protects paved surfaces from damage
- Provides strong traction and stability
- Reduces vibration and improves ride comfort



FEATURES AND FUNCTIONS





► COMPACT DESIGN

With a width of only 849 mm, it can easily operate in confined spaces such as backyard alleyways, narrow passages, and tight corners. Its compact design allows it to access areas where larger machines cannot enter, making it ideal for tasks like trenching, landscaping, and maintenance work. Even in limited spaces, it can maintain efficient and stable performance.

► RETRACTABLE DOZER BLADE

Features a retractable dozer blade with easily adjustable width for tight spaces. The blade can be extended or retracted by removing and attaching the pin, providing flexible operation and high pushing efficiency—ideal for leveling yards and small-scale construction projects.



WIDE RANGE OF OPERATIONS

► CAN BE EXCAVATED IN NARROW SPACES

By swinging the work machine, it is possible to excavate in narrow spaces and near walls.

Boom swing angle (right): 50°

Boom swing angle (left): 55°

► RETRACTABLE TRACKS

It features retractable tracks with a range of 750-990 mm, easily extended and retracted via a control lever. When the tracks are retracted, it can easily pass through narrow passages and doorways; when extended, it offers excellent stability and is suitable for various tasks.



FEATURES AND FUNCTIONS



KEY FEATURES



- » Features a pilot hydraulic system with dual control levers, providing smooth and precise operation, quick response, and improved work efficiency.
- » The operation lock lever prevents engine start unless raised, ensuring safe operation.



- » The hydraulic quick-change tilt switch has dual mechanical protection to prevent accidental activation, enhancing safety.
- » The hydraulic quick-change valve block on the boom ensures safer hydraulic lines and reduces damage during operation.





- » Equipped with a rearview mirror under the roof for enhanced visibility and safety during operation.
- » The roof is fitted with a front spotlight and warning lights, ensuring better illumination and safety in low-light conditions.

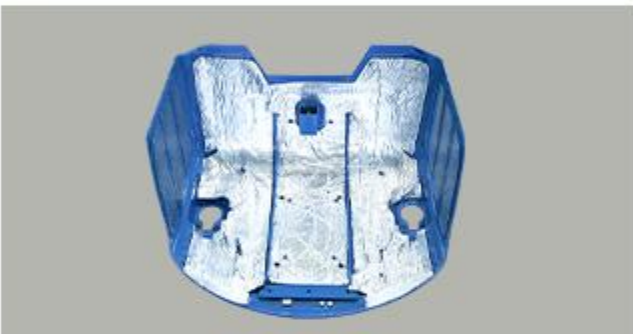


- » The fully-opening bonnet opens wide to the rear, allowing easy access for daily inspections and part replacements.
- » The air filter keeps dust and impurities out of the engine, extending its service life.



SEAT COVER SOUND INSULATION

Sound-absorbing cotton inside the seat cover reduces noise and helps isolate heat for improved operator comfort.



HYDRAULIC THUMB & QUICK COUPLER

Improves efficiency and safety, allowing quick attachment changes and precise material handling.



NICKEL-PLATED GREASE NIPPLE

Welded guard for better protection. The pointed design ensures precise grease gun connection and prevents slipping or leakage.



LOWER FRAME LIFTING POINTS

Two lifting points are added near the undercarriage motor for safer hoisting. They allow quick connection to hooks or cables for safe lifting and recovery in emergency situations.



FRONT ROPS BAR

This protects the operator from the risk of falling. It can also be folded to accommodate different heights for transport, etc.

※ROPS (Rollover Protective Structure)

This stands for "rollover occupant protective structure" and refers to a structure that protects the operator wearing a seat belt from danger when the machine rolls over.



FOUR-WAY OIL PIPE

Four high-pressure hydraulic lines provide stable oil flow, ensuring smoother and more efficient attachment operation.



RIPPA ATTACHMENTS



PERFORMANCE MATCHED

It supports quick attachment changes, enabling one machine to handle digging, breaking, grabbing, drilling, leveling, and trenching. By adapting to different tasks, it boosts efficiency, reduces equipment and rental costs, and lowers labor dependency. More than just a machine, it's a personal engineering team ready to work anytime.

Visit rippa.com



BUCKET

- Optional bucket sizes.
- weight: 15kg
size: 45 × 20 × 40 cm
- weight: 22kg
size: 45 × 40 × 40 cm
- weight: 29kg
size: 45 × 60 × 40 cm
- weight: 36kg
size: 45 × 80 × 40 cm



MUD BUCKET

- Optional mud bucket sizes.
- weight: 16.5kg
size: 35 × 40 × 40 cm
- weight: 21kg
size: 35 × 60 × 40 cm
- weight: 27kg
size: 35 × 80 × 40 cm
- weight: 32kg
size: 35 × 100 × 40 cm



SKELETON BUCKET

- Optional skeleton bucket sizes.
- weight: 31kg
size: 45 × 60 × 40 cm



RAKE

- Optional rake sizes.
- weight:16.5kg
size:53 × 43 × 18 cm
- weight:22kg
size:53 × 63 × 18 cm
- weight:28kg
size:53 × 83 × 18 cm



RIPPER

- Optional ripper size
- weight:12kg
size:53 × 14 × 20 cm



TILTING BUCKET

- Optional tilting bucket size
- weight:39.5kg
size:72 × 60 × 30 cm
- weight:53kg
size:72 × 80 × 30 cm
- weight:58kg
size:72 × 100 × 30 cm



LOG GRAPPLE

- Lightweight log grapple size
weight:37kg
size:50 × 45 × 54 cm
- Hydraulic rotating log grapple size
weight:117kg
size: 50 × 80 × 93 cm



HYDRAULIC BREAKER

- Hydraulic breaker size
- weight:79kg
size:66 × 30 × 40 cm



LAWN MOWER

- Lawn mower size
- weight:115kg
size:110 × 46 × 65 cm



ROTARY DRILL

- Optional rotary drill sizes.
Weight: 50kg
Length: 130cm Diameter: 15cm
- Weight: 51kg
Length: 130cm Diameter: 20cm
- Weight: 53kg
Length: 150cm Diameter: 30cm
- Weight: 54kg
Length: 130cm Diameter: 30cm
- Weight: 55kg
Length: 170cm Diameter: 20cm



HEDGE CUTTER

- Optional hedge cutter sizes.
weight: 62kg
size: 150 × 38 × 40 cm



COMPACTOR PLATE

- Optional compactor plate sizes.
weight: 111kg
size: 34 × 65 × 57 cm



HYDRAULIC THUMB

- Optional hydraulic thumb sizes.
weight: 21.5kg
weight: 26kg
weight: 22.8kg



Pool Digging



Driveway Repair



Drainage Trenching



Stump Removal



Tree Planting



Snow removal



Land Leveling



Fence Installation

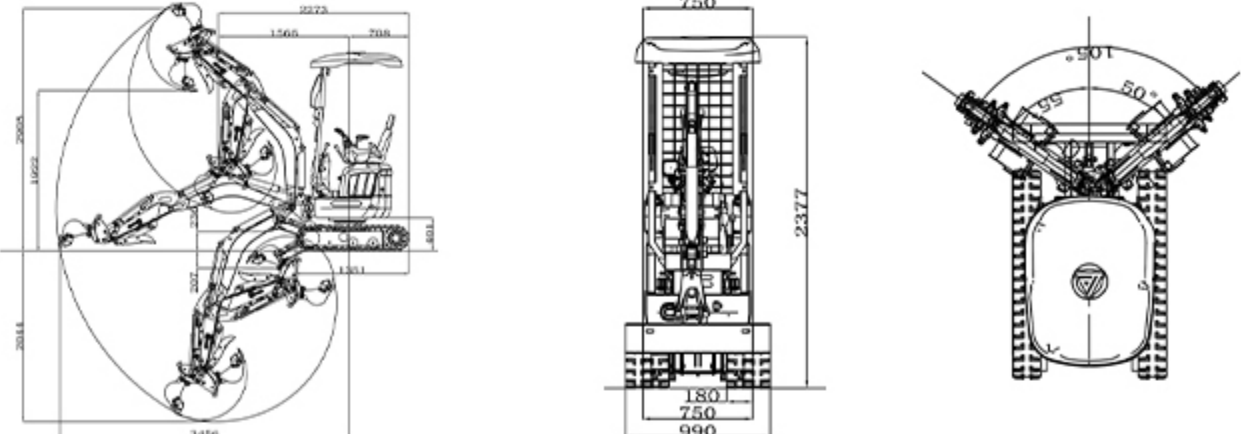


Small Foundations



Farm Construction

DETAILED PARAMETER CONFIGURATION

Basic parameters		
Operating weight	1320 kg	2904lb
Bucket capacity	0.014 m ³	0.494ft ³
Travel speed low/high	0-1.8/0-2.8 km/h	0-1.1/0-1.74mph
Gradeability	30 %	30%
Ground pressure	26.79 kpa	3.89psi
Maximum digging force	9.8 kN	2203lbf
Maximum digging radius	3456 mm	136.1in
Maximum digging depth	2044 mm	80.5in
Maximum digging height	2905 mm	114.4in
Maximum dumping height	1923 mm	75.8in
Maximum deflection angle	105°	105°
Track extension range	750-990 mm	29.5-39in
Body		
Transport length	2273mm	89.5in
Transport width	849mm	33.4in
Transport height	2377mm	93.6in
Counterweight ground clearance	402mm	15.8in
Bucket width	400mm	15.7in
Boom length	1450mm	57.1in
Arm length	880mm	34.6in
Bulldozer blade width	750-990mm	29.5-39in
Engine		
Engine brand	Kubota	Kubota
Engine model	D722	D722
Maximum power	10.2kW	13.7hp
Maximum speed	2500 rpm	2500rpm
Displacement	0.719L	0.19gal
Number of cylinders	3	3
Cooling method	Water-cooled	Water-cooled
Engine oil change amount	2.5L	0.66gal
Fuel form	Diesel	Diesel
Fuel grade	0/-10	0/-10
Theoretical fuel consumption	1.1-1.5L/h	0.29-0.40gal
Hydraulic system		
Main pump type/model	Gear pump / 305+305+303	-
Multi-way valve	THD12 multi-way valve	-
Multi-way valve brand	Taifeng	-
Rated set pressure (Mpa)	16.7MPa	2422.2psi
Maximum set pressure (MPa)	18MPa	2610.7psi
Travel hydraulic motor type/model	Paiyi WDM-390	-
		
Unit: mm		

Shandong Rippa Machinery Group Co., Ltd.

Address: No. 39, Guang'an Road, Liuhan Sub-district Office, High-tech Zone, Jining City, Shandong Province.

Some specifications are based on engineering measurements and may differ from actual conditions. Specifications are for comparison purposes only and are subject to change without notice. Specifications of individual RIPPA devices may vary due to normal variations in design, manufacturing, operating conditions and other factors. Some images of RIPPA devices are not limited to standard packages.



RIPPA®