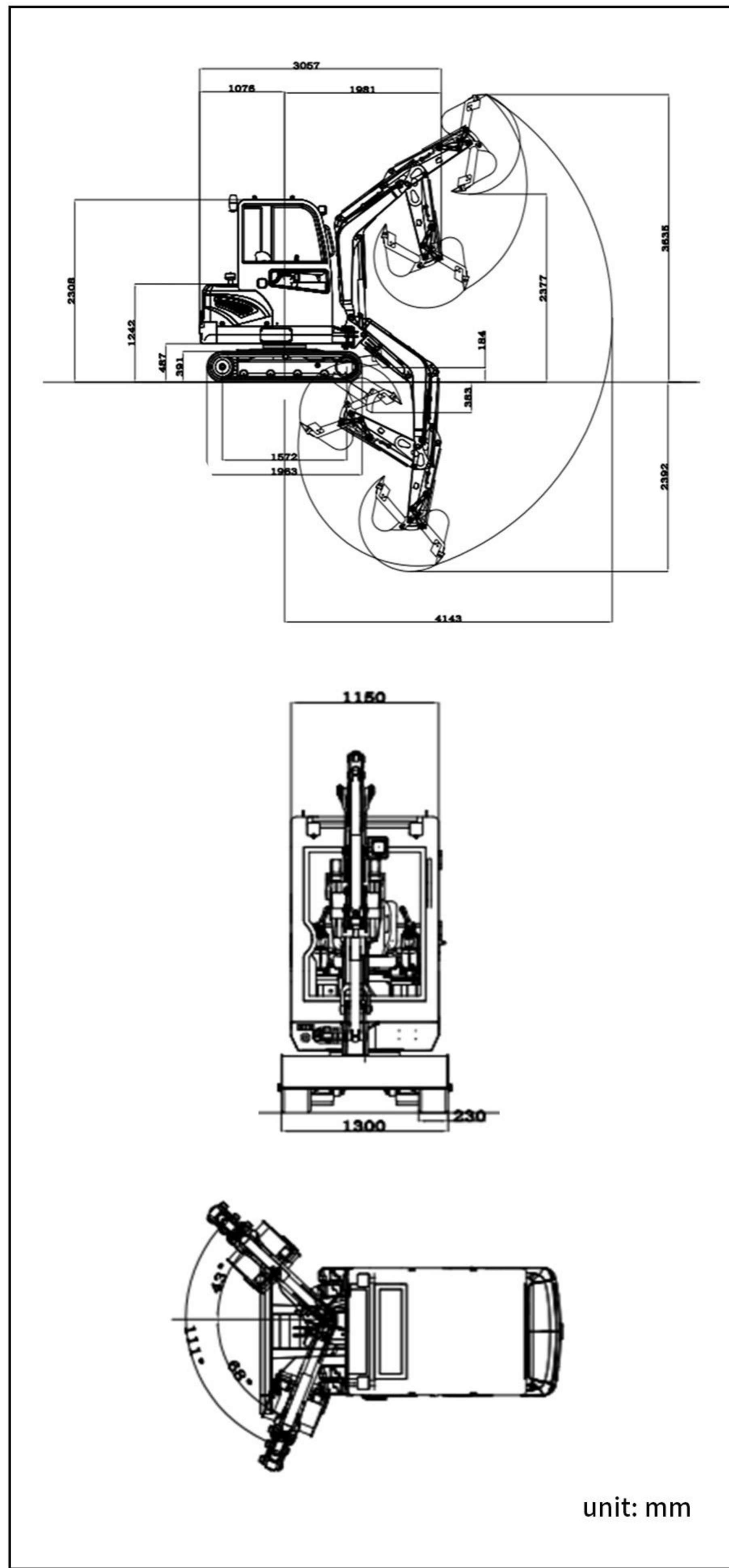


■ Schematic diagram of work area



■ Specification

|                              | Model                            | unit              | R330            |
|------------------------------|----------------------------------|-------------------|-----------------|
| Basic performance parameters | Overall machine operating weight | lb(kg)            | 4448(2017.5)    |
|                              | Bucket capacity                  | ft³(m³)           | 1.907 (0.054)   |
|                              | Travel speed (low/high speed)    | mph(Km/h)         | 0-0.932 (0-1.5) |
|                              | Climbing ability                 | (%)               | 30%             |
|                              | Ground pressure                  | (Kpa)             | 31.43           |
|                              | Maximum digging force            | (kN)              | 15.6            |
|                              | Maximum digging radius           | in(mm)            | 163.234 (4143)  |
|                              | Maximum digging depth            | in(mm)            | 94.2 (2392)     |
|                              | Maximum digging height           | in(mm)            | 143.219 (3635)  |
|                              | Maximum unloading height         | in(mm)            | 93.654 (2377)   |
| Maximum deflection angle     | °                                | 111               |                 |
| Track extension range        | in(mm)                           | -                 |                 |
| Engine                       | Engine Brand                     |                   | Kubota          |
|                              | Engine Model                     |                   | D1105           |
|                              | Maximum Horsepower               | hp                | 22.9            |
|                              | Maximum Power                    | kw                | 17.1            |
|                              | Maximum Speed                    | rpm               | 3000            |
|                              | Displacement                     | gal(L)            | 0.29 (1.123)    |
|                              | Number of Cylinders              |                   | 3               |
|                              | Cooling Method                   |                   | Water cooling   |
|                              | Engine Oil Change Requirement    | gal(L)            | 1.05(4)         |
|                              | Fuel Type                        |                   | DIESEL FUEL     |
| Fuel Octaic Acid             |                                  | 0/-10             |                 |
| Theoretical Fuel Consumption | gal/h(L/h)                       | 0.34-0.4(1.3-1.5) |                 |
| Body                         | Transport length                 | in(mm)            | 120.446 (3057)  |
|                              | Transport width                  | in(mm)            | 51.22(1300)     |
|                              | Transport height                 | in(mm)            | 90.935 (2308)   |
|                              | Counterweight ground clearance   | in(mm)            | 19.188 (487)    |
|                              | Bucket width                     | in(mm)            | 15.760 (400)    |
|                              | Boom length                      | in(mm)            | 73.678 (1870)   |
|                              | Stick length                     | in(mm)            | 36.445 (925)    |
|                              | Dozer blade width                | in(mm)            | 51.2 (1300)     |

■ HYDRAULIC SYSTEM

|                             |                                         |                                |                |
|-----------------------------|-----------------------------------------|--------------------------------|----------------|
| Main pump brand             | Paik-1203                               | Type of travel hydraulic motor | BWV-800WCD     |
| Main pump maximum flow rate | 36                                      | Travel motor brand             | Zhenjiang Dali |
| Multi-way valve             | 8-way hydraulic control multi-way valve | Motor displacement             | 801            |
| Multi-way valve brand       | Taifeng Hydraulics                      | Type of rotary hydraulic motor | Paik2.5K       |
| Rated setting pressure      | 17MPa                                   | Displacement                   | 245            |
| Maximum setting pressure    | 18MPa                                   |                                |                |

- Please read the operator' s manual carefully before use and operate the machine correctly.
- Always wear the seat belt during operation. (ROPS models only)
- Only trained and qualified personnel should operate this machine in accordance with local laws and regulations.
- Inspect the machine regularly before and during operation to help prevent accidents, damage, and unexpected downtime.
- Perform routine maintenance and safety inspections according to the maintenance schedule in the operator' s manual.
- Repairs, inspections, and servicing should be carried out by qualified technicians or authorized service personnel.



# MINI EXCAVATOR R330



CLEAN EXHAUST GAS IS DISCHARGED, ENERGY-SAVING AND EFFICIENT.

**EXCELLENT PERFORMANCE, FULLY MEET THE NEEDS OF ALL TYPES OF USERS.**



Complies with Stage 5 of European vehicle emission standards

Comply with U.S. EPA environmental standards



# R330 SMALL EXCAVATOR

The machine is equipped with an environmentally friendly engine. It meets Euro V and EPA emission standards, is fuel-efficient, low-noise, and can achieve high power output. Durability, safety and comfort are comprehensively upgraded. Pilot operation on both sides, large arm side swing, shock-proof seat, equipped with hot and cold air conditioning, convenient and fast operation performance improves work efficiency.

## THREE UPGRADES



### Two side pilot operation

It uses a pilot handle with a load-sensitive multiplex valve, and the pilot handle is smoother, and you feel the contrast more clearly when you are driving.



### Reverse windshield

The openable design allows the operator to open the windshield when needed to enhance air circulation in the cab, which is particularly suitable for high-temperature working environments and improves the operator's comfort.



### Bulldozing plate

The double-layer widened and thickened bulldozer has a longer service life.



### One forging oil cylinder

The one-piece forged cylinder rod is used which will not break and has higher precision.



### Improved plowing performance

Increase the bottom height of the bucket, Reduces the risk of contact with the loading platform



### Deflectable boom

Deflectable boom, multi-degree-of-freedom operation, large deflection angle, more flexible operation, and can meet more operating requirements



### Oil cylinder protection

Cylinder cover can protect the cylinder during operation and avoid damage to the cylinder.



# R330 MINI EXCAVATOR

A high-dimensional intelligent fusion that is safe, comfortable, and easy to operate.

# USING A LOAD SENSING SYSTEM

Pursuing High Performance for All Basic Performances, The system continuously controls the pump discharge flow rate by feeding back the "pump discharge pressure" and "actuator load pressure" to the LS regulator installed in the hydraulic pump, and only provides the required flow rate to the control valve.



## Digital display instrument

The integrated digital instrument panel on the console has a large screen, simple display, and is easy to read. Moreover, due to its position on the side of the seat, it can be used to check various items with minimal visual movement during operation. Necessary information can be displayed through simple operations, and function buttons are located below the LCD to improve operability.



## Power switch







The main switch of the power supply can be turned off with just one click, which can prevent power loss and fully protect the equipment during long-term shutdown



## Arm drag

Improve operator comfort and operating efficiency, reduce fatigue



-  **Battery level**  
1
-  **Lamp indicator light**  
4
-  **Oil quantity**  
2
-  **Hydraulic oil alarm**  
5
-  **Water temperature**  
3
-  **Oil pressure alarm**  
6

## Safety pilot lock

Safely operate the pilot lock handle to prevent misoperation and be safer.



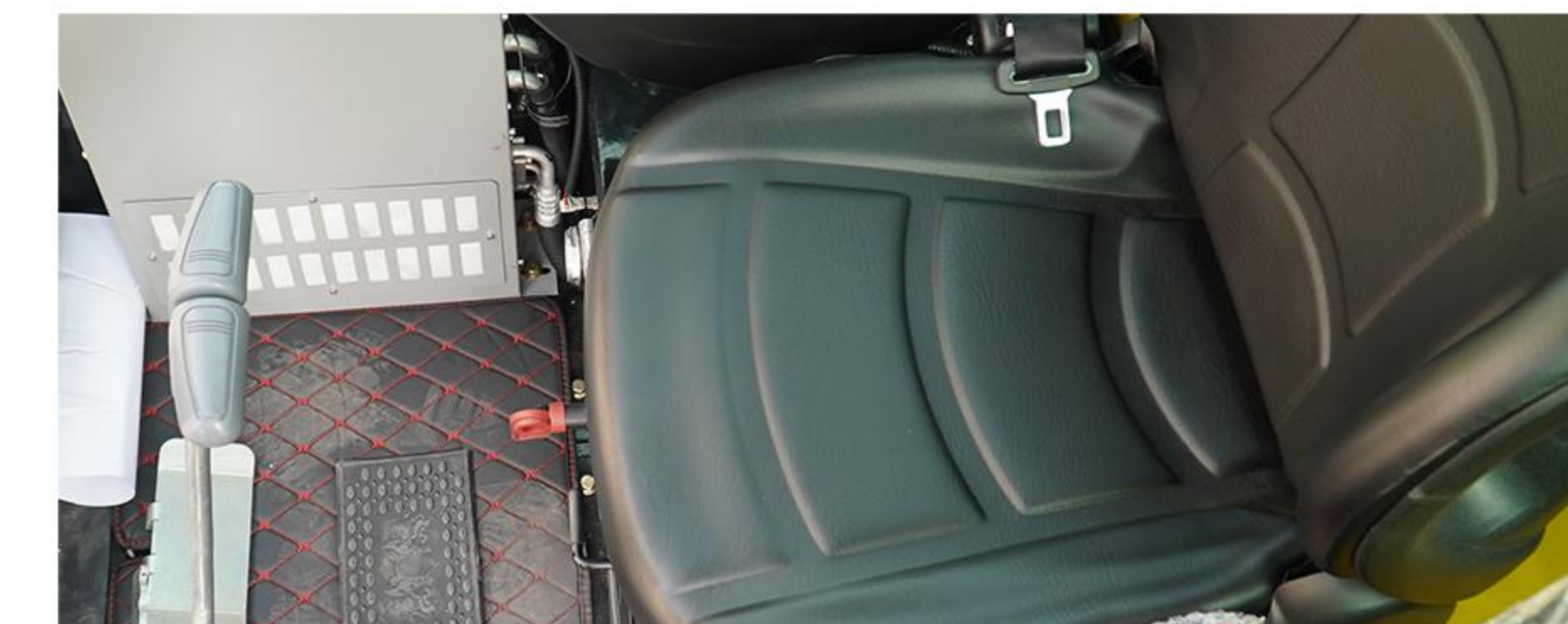
## Working equipment

The cast boom bracket is adopted, with a smooth and thick structure, one-piece molding, beautiful appearance and durability. The large arm is arranged with high-pressure iron pipes, which has a neat and beautiful appearance, effectively reduces the wear of the oil pipes, has a long service life, and is easy to replace some oil pipes for easy maintenance.



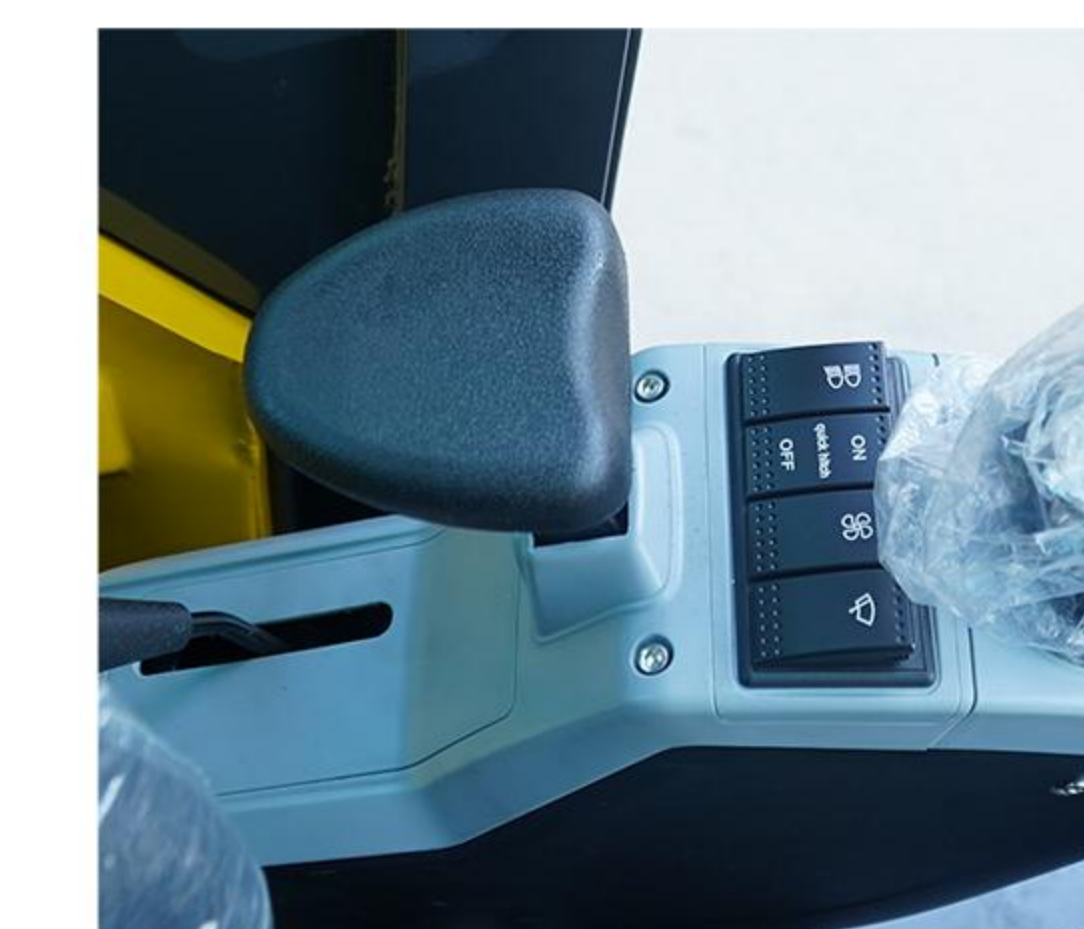
## Semi-enclosed seat

Semi-enclosed shock-proof seat, ergonomically designed, adjustable, highly comfortable, as comfortable as a passenger car



## Armrest box

Adopting a plastic armrest box, the appearance is more beautiful. The left armrest box adopts an upward flipping design, which is convenient for getting on and off during work. At the same time, the lever is a pilot lock switch, which protects the oil circuit and prevents accidents caused by accidentally touching the pilot handle when getting on and off. The upper side of the armrest box is equipped with a hand rest, which can work for a long time and reduce fatigue



## Comfortable cab

The design concept of "driver centered" greatly reduces the noise and vibration inside the cab; Simultaneously equipped with an air conditioning system, it meets the needs of seasonal operations and improves the comfort and convenience of operations



# Durable and easy to maintain



LED lighting



Warning lights



oil filler



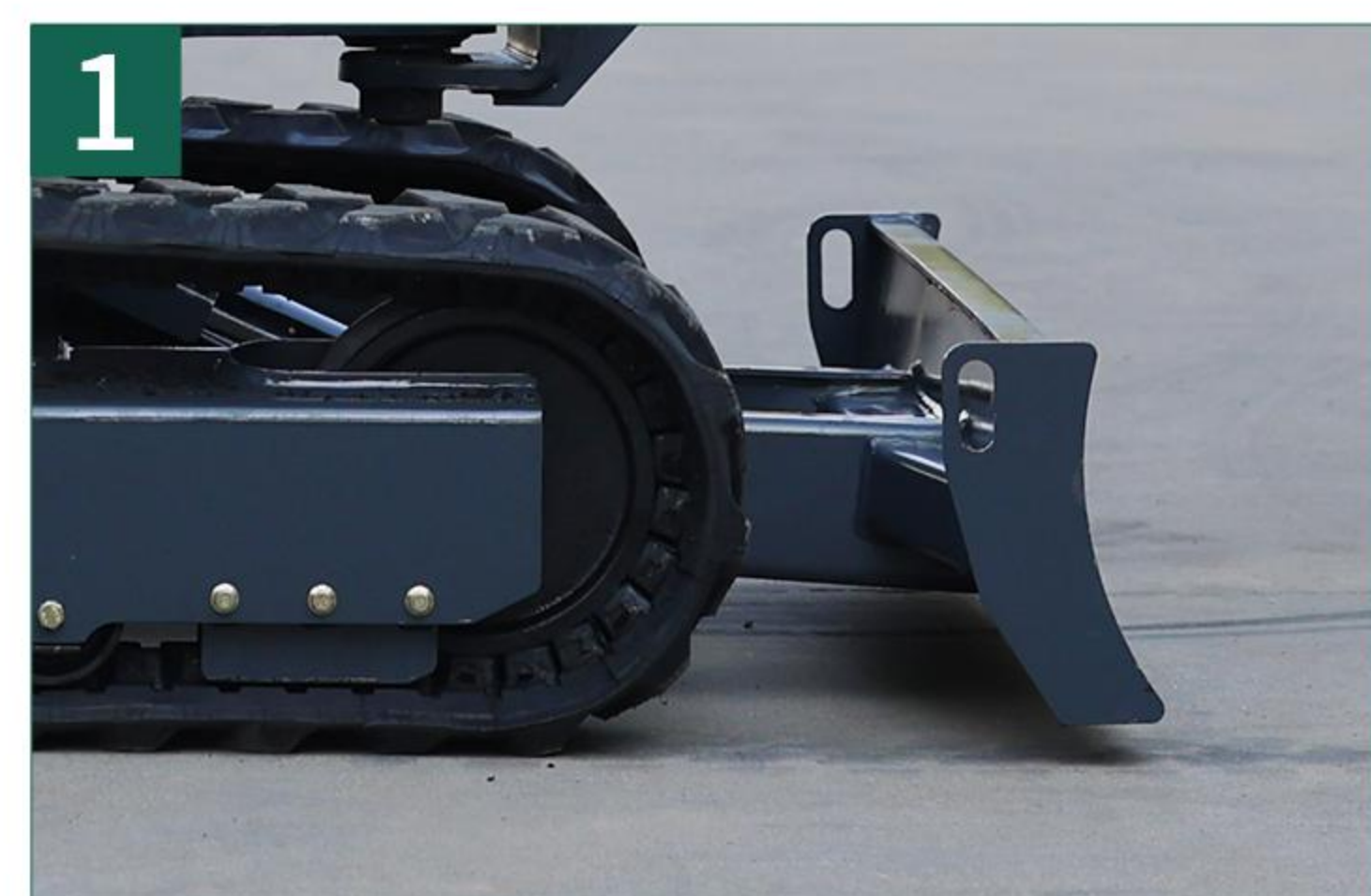
engine



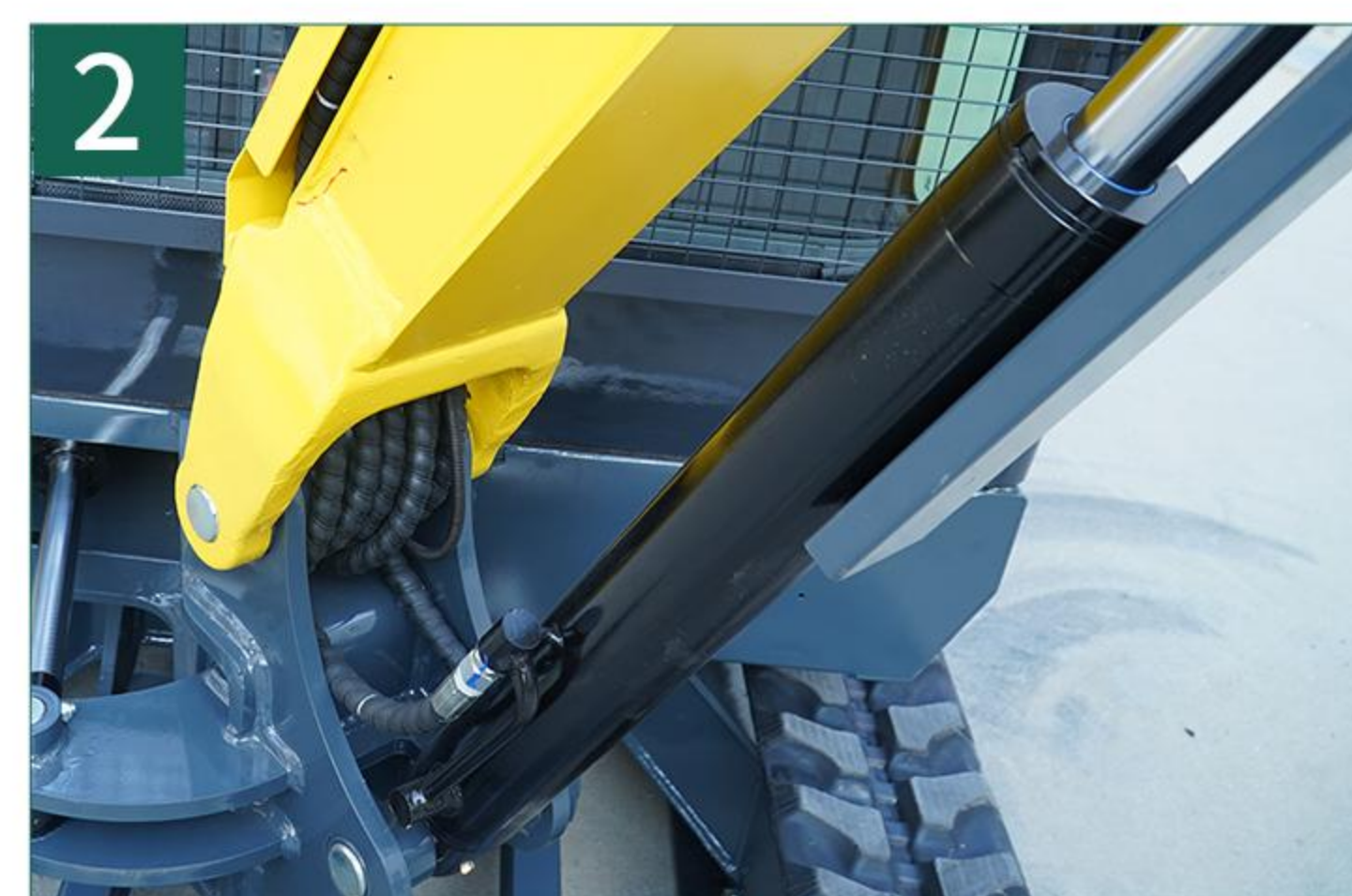
air filter



Built in walking motor



Thickened bulldozer shovel



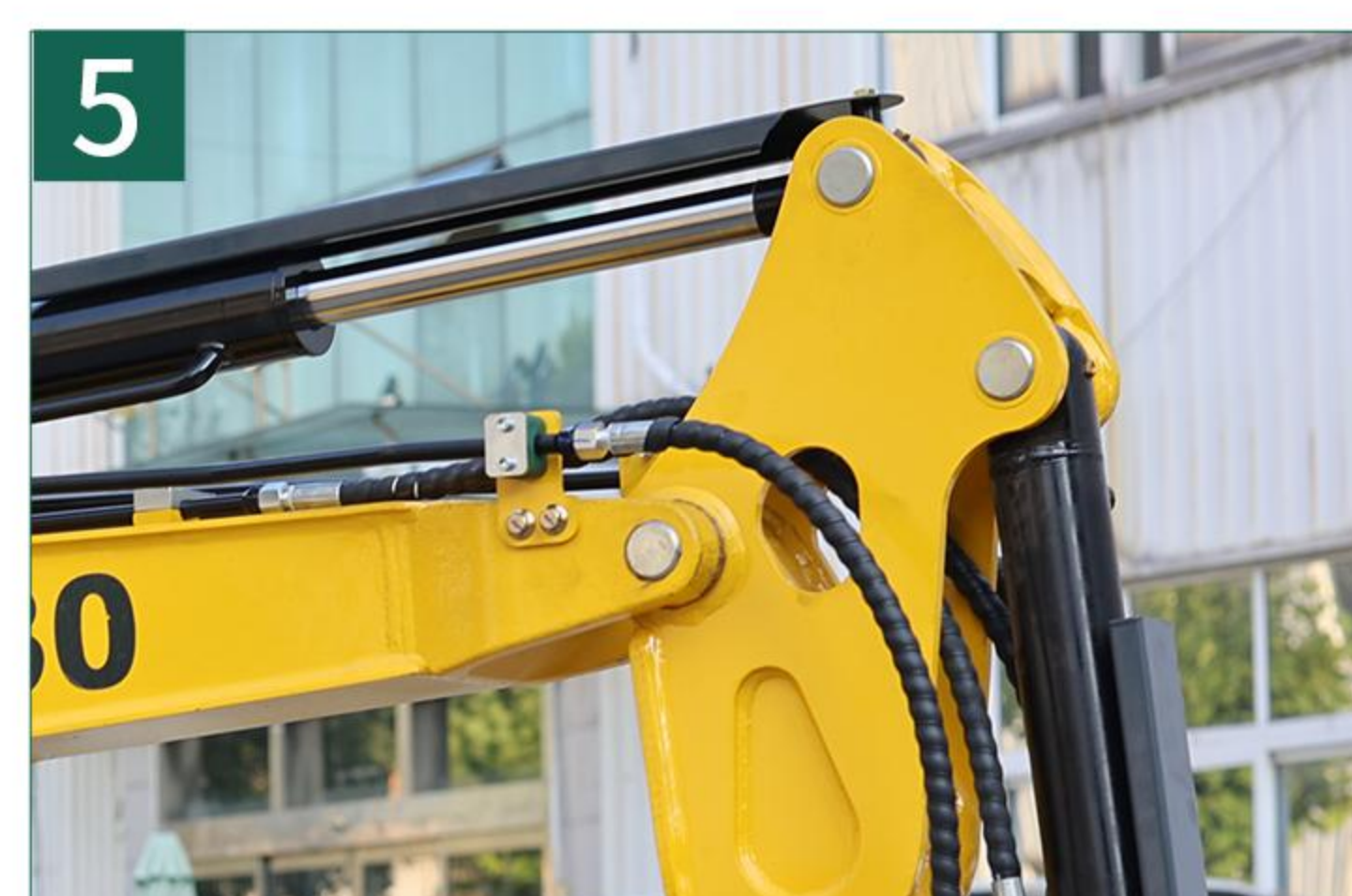
One forging forming oil cylinder



Thickened large excavation bucket



Oil cylinder protection cover



Galvanized quenched pin shaft



Crushing hammer shut-off valve



# WE ARE RIPPA

Shandong Rippa Machinery Group Co., Ltd. is located in the No. 39, Guang'an Road, Liu-hang Sub-district Office, High-tech Zone, Jining City, Shandong Province, It is a state-owned high-tech enterprise with import and export rights.

The company's employees are energetic and enterprising, constantly creating the legend and fame of the rippa!



**Shandong Rippa Machinery Group Co., Ltd.**

Address: No. 39, Guang'an Road, Liu-hang Sub-district Office, High-tech Zone, Jining City, Shandong Province

Some specifications are based on engineering measurements and may deviate from actual conditions. Specifications are for comparison purposes only and are subject to change without notice. Specifications of individual RIPPA equipment will vary based on normal variations in design, manufacturing, operating conditions and other factors. Some pictures of RIPPA equipment are not limited to standard packages.



[www.rippa.com](http://www.rippa.com)